



# WASTE NOT OC COALITION

Feed the Need

Want to donate funds to  
Waste Not OC?  
Text the word **Orange** to  
41444 or [click here](#)



[HOME](#) [ABOUT US](#) [NEWS](#) [FOOD RECOVERY](#) [IDENTIFYING FOOD INSECURITY](#) [FIND THE NEAREST PANTRY](#) [GET INVOLVED](#) [RESOURCES](#) [CONTACT US](#)



## What we do

Food Recovery

Identify Food Insecure Individuals


Provide Food Resources

**Mike Learakos**  
Executive Director  
[mike@katellagrill.com](mailto:mike@katellagrill.com)

# **Social Determinants of Health:**

**Conditions in the places where people live, learn, work, and play affect a wide range of health risks and outcomes**





“There is nothing new about poverty. What is new is that we now have the techniques and the resources to get rid of poverty. The real question is whether we have the will.”

-Martin Luther King Jr.





# Feeding America Map the Meal Gap 2014

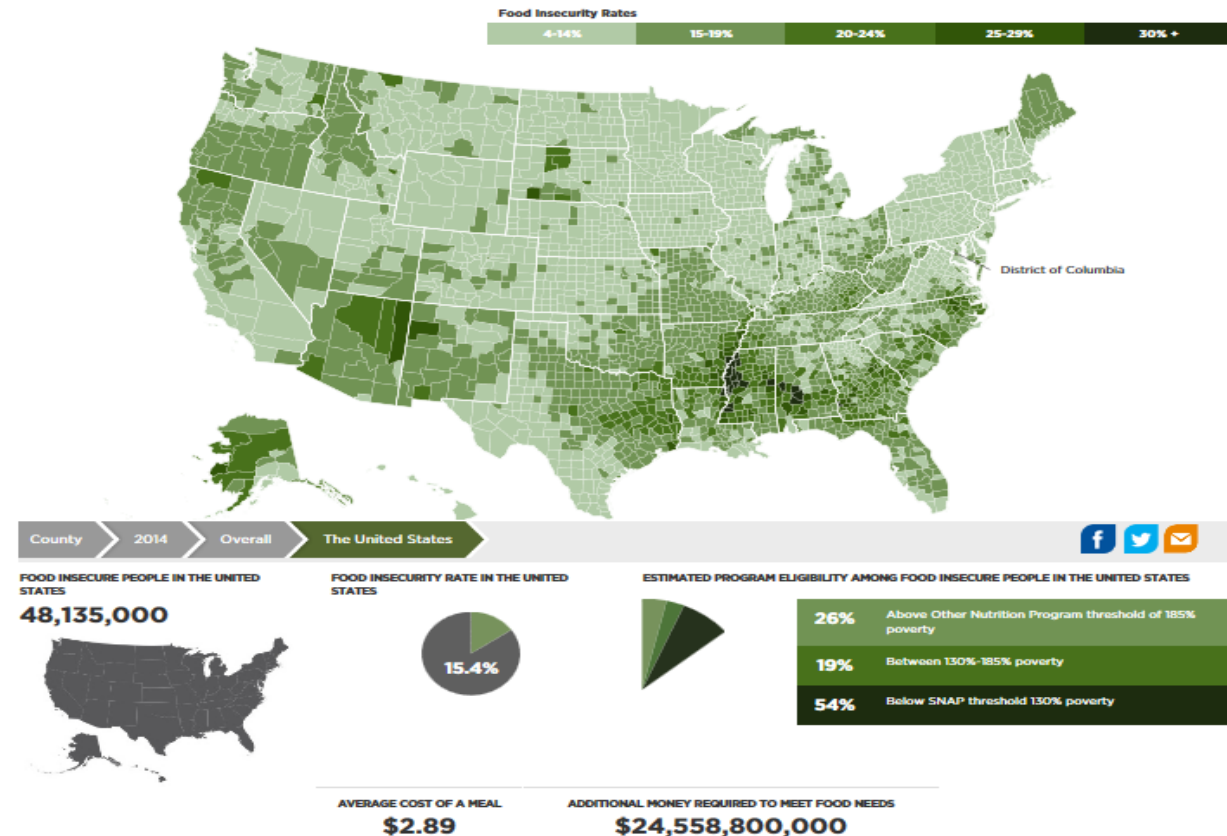


Food insecurity exists in every county and congressional district in the country. But not everyone struggling with hunger qualifies for federal nutrition assistance. Learn more about local food insecurity and the food banks in your community by exploring data from Feeding America's annual Map the Meal Gap project.

## Food Insecurity in The United States

Change the selections below or simply click on the map to start exploring.

Map Type	County
Year	2014
Demographic	Overall
Location	National





# Food Insecurity Statistics Orange County

Source: (Feeding America. Map the Meal Gap 2013 and 2014.)

**2013**

12.7%

349,690 people

**2014**

10.9%

335,480 people

**1 in 5 children face food insecurity**

# Child Poverty Rates in California Counties

County or County Group	Child Poverty Rate (%)	County or County Group	Child Poverty Rate (%)
Merced	40.6	Colusa, Glenn, Tehama, Trinity	21.7
Fresno	36.4	Shasta	21.7
Tulare	36.3	Yolo	21.3
Lake, Mendocino	35.2	Solano	20.8
Kern	35	San Diego	19.6
Imperial	32.7	San Luis Obispo	19.2
Stanislaus	32.4	Santa Barbara	19
Madera	30.7	Orange	18.4
Del Norte, Lassen, Modoc, Siskiyou,	29	Ventura	16.8
Kings	28.7	Sonoma	16.1
Butte	26,4	Alameda	15.8
Los Angeles	26.3	Contra Costa	15.6
Sutter, Yubs	26	San Francisco	15.4
San Joaquin	25.2	Santa Cruz	14.3
Sacramento	25.2	El Dorado	14.2
Humboldt	24.7	Nevada, Plumas, Sierra	12.7
San Bernardino	24.6	Santa Clara	12.2
Alpine, Amador, Calaveras, Inyo, Mariposa, Mono, Tuolumne	22.6	Marin	10.5
Riverside	22.1	Placer	9.7
Monterey, San Benito	22	San Mateo	8.6
Napa	21.9		

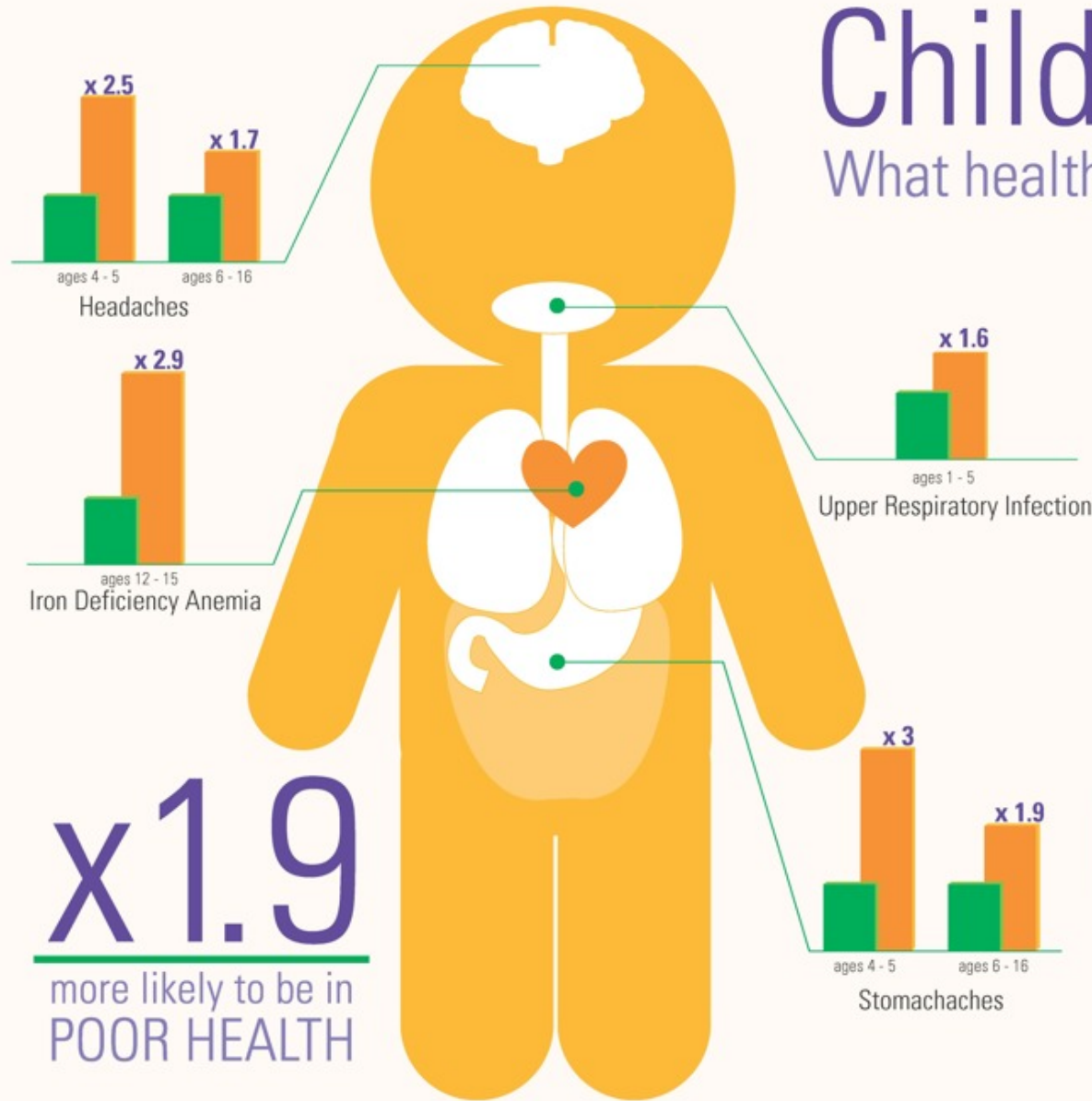
# 5 CA Counties With More Than 100K Food Insecure Children

State	County (Metro area)	Number of Children Living in Food-insecure Households	Child Food-insecurity Rate
CA	LOS ANGELES	620,090	25.8%
NY	NEW YORK (Five Boroughs, collectively)	420,470	23.7%
TX	HARRIS (HOUSTON)	298,860	26.1%
IL	COOK (CHICAGO)	255,180	20.8%
AZ	MARICOPA (PHOENIX)	248,090	24.6%
TX	DALLAS	175,810	26.8%
CA	SAN DIEGO	163,780	22.6%
CA	ORANGE (ANAHEIM)	156,460	21.2%
CA	RIVERSIDE	155,220	25.1%
CA	SAN BERNARDINO	152,950	25.8%
FL	MIAMI-DADE	141,710	26.0%
TX	BEXAR (SAN ANTONIO)	125,290	27.0%
NV	CLARK (LAS VEGAS)	124,600	25.5%
TX	TARRANT (FORT WORTH)	122,550	24.2%
MI	WAYNE (DETROIT)	102,790	23.3%



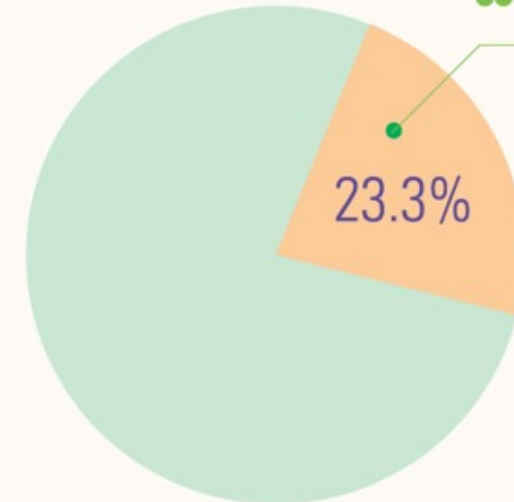
# Child Food Insecurity

What health problems does it cause in children?



## What is Food Insecurity?

Food Insecurity is defined by the limited availability of nutritionally adequate and safe foods. It also depends on the limited availability to acquire food in a socially acceptable way.



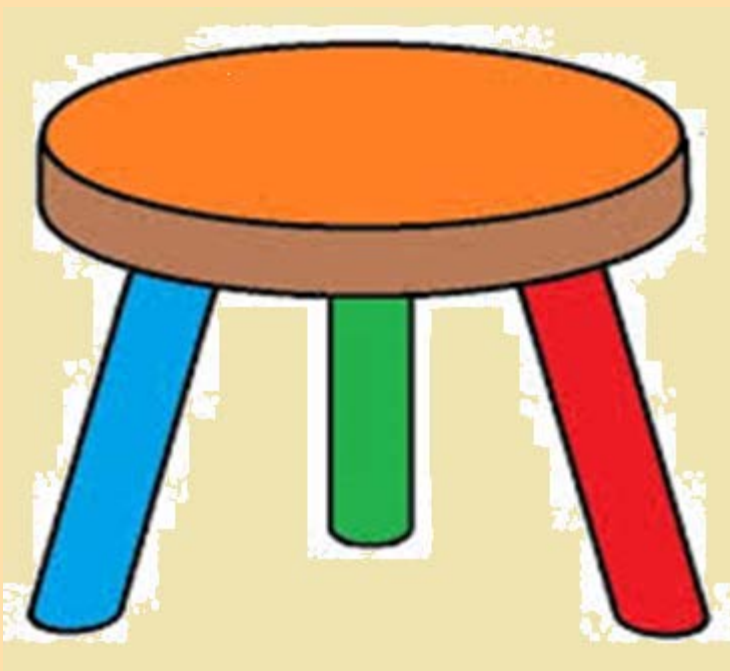
**1 in 6**  
children suffer from  
FOOD INSECURITY



## 3-Pronged Approach

### **Food Recovery**

Educate restaurants and grocery stores on the Good Samaritan Act to increase food donations.



### **Food Distribution**

Connect those in need with pantries that provide wholesome food.

### **Identify those in need**

Start asking the questions if individuals are facing food insecurity.



## **Health and Safety Code Section 101060**


**The county health officer may designate a nonprofit food distribution agency to coordinate and facilitate the donation of food and food products to nonprofit, charitable corporations, from available sources, including restaurants, grocery stores, or food distributors.**

# The Facts about Food Donations

- Fact sheet on donation laws and regulations

## FOOD FACTS DONATIONS

Food facilities that are  
should know that:



for a violation occurring after the

- A facility that donates food will not be liable for any damage that results from the consumption of the donated food, regardless of compliance with any laws relating to the packaging, labeling, or storage after the donation.

These are legal references from  
California law protects **you** while

COUNTY OF SAN BERNARDINO  
Environmental Health Services  
DEPARTMENT OF PUBLIC HEALTH

## The Facts to Know When Donating Food

Did you know?

- Any food facility may donate food to a food bank or to another nonprofit charitable organization for distribution to persons free of charge.
- No food facility that donates wholesome food shall be subject to civil or criminal liability or penalty for violation of any laws, regulations, or ordinances.
- A food facility that donates food will not be liable for any damage that results from the consumption of the donated food, regardless of compliance with any laws relating to the packaging, labeling, or storage after the donation.
- A food facility must handle and store the food to be donated in a safe and sanitary manner. Food donated to the less fortunate must be maintained in the same manner as food sold to your customers.

As a food facility donating food, California state law protects you and supports food facilities that do the right thing!

Can you think of any reason not to donate your leftover food now?  
We can't.

Visit [www.Wastenotoc.org](http://www.Wastenotoc.org) for more information on who needs your help, where you can donate and how you can be a part of ending hunger in Orange County.  
Donating food is made easier than you think!

OC  
HEALTH

## OUT ED FOOD

ate food to a food bank or to  
e organization for distribution to

s food shall be subject to civil or  
ity for violation of any laws,  
for a violation occurring after the

will not be liable for any damage  
sumption of the donated food,  
with any laws relating to the  
age after the donation.

As a food facility donating food,  
California state law **protects you!**

Can you think of any reason not to  
donate your leftover food now?

We can't.

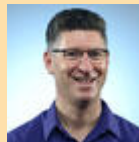
Click Here for related legal references from the  
California Health & Safety Code.





## **Los Angeles Times Column: Orange County program makes donating leftover food easier**

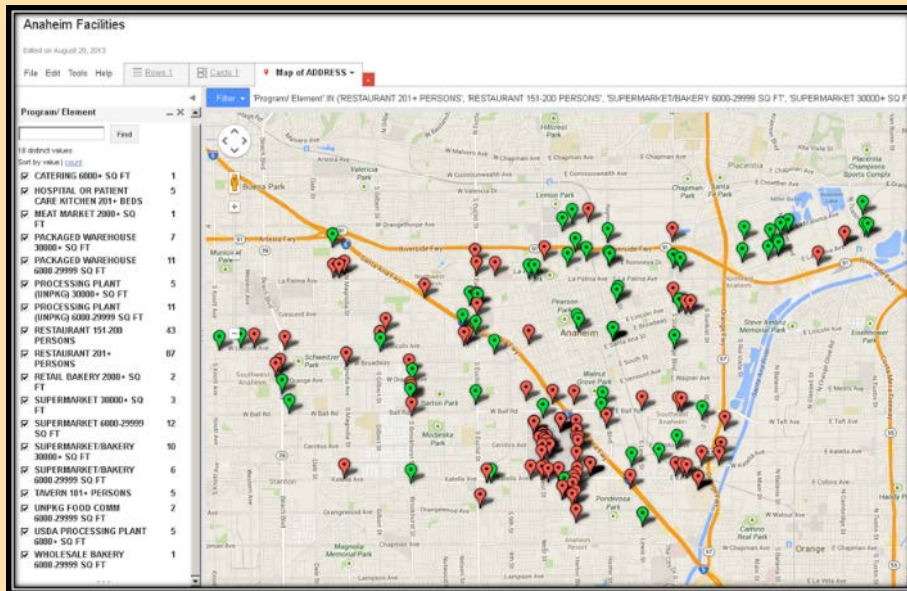
**“One of the genius aspects of Waste Not OC is the way it enlists county restaurant inspectors in the effort to reduce food waste. Since they're already interacting with restaurant owners, they're in the best position to educate potential donors.”**



**David Lazarus Los Angeles Times Reporter  
4/2016**

# Pilot: Anaheim-Orange Food Recovery

- City-wide efforts to increase food recovered by identifying and educating potential donors
- Annual window seal to honor participants working to end hunger





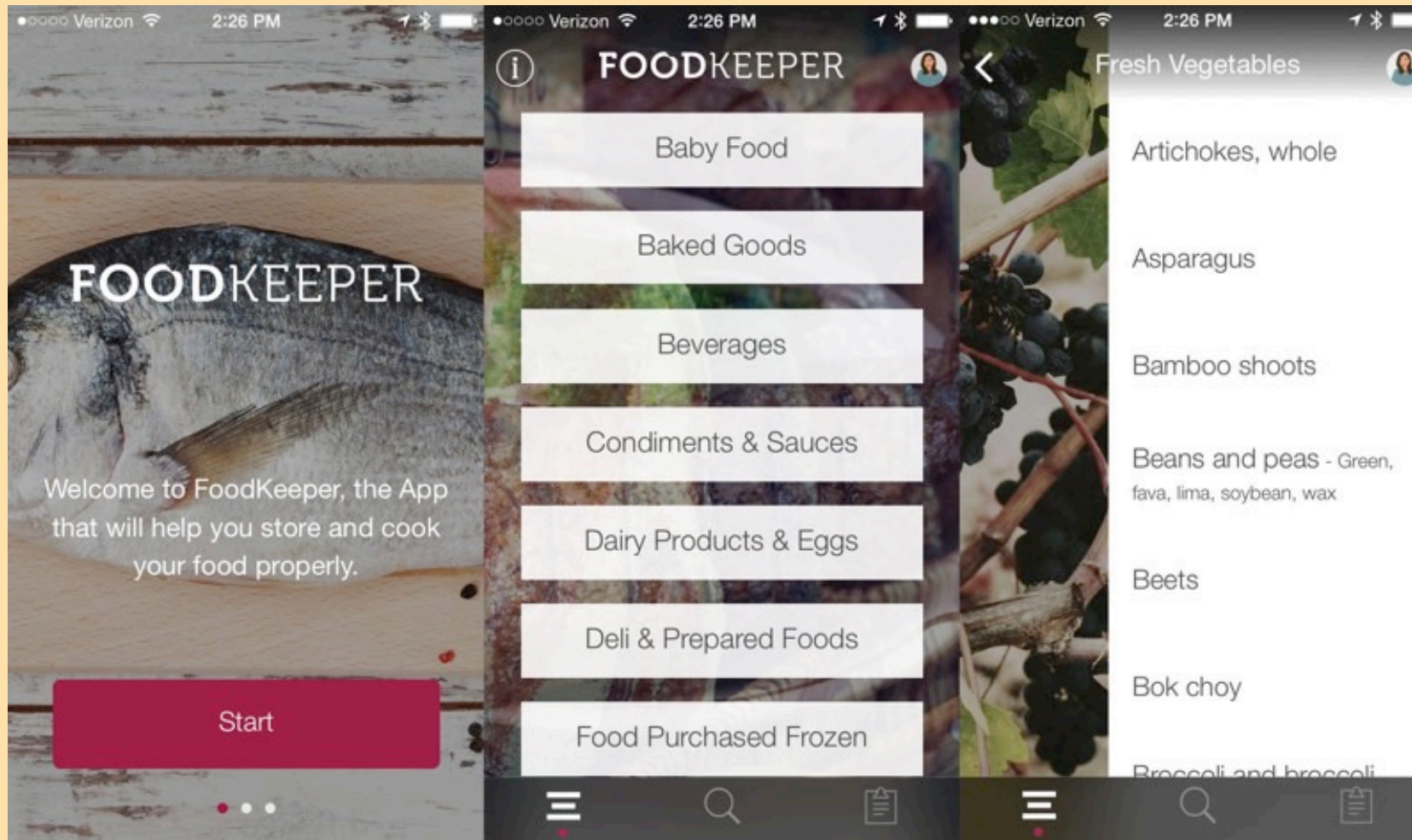
**Targeting primarily the cities of Anaheim  
and Orange**

**305 tons (500,013 meals)  
of newly recovered food**

**Northgate Market donates  
58,000 meals to Orange County  
food banks**



THE ORANGE COUNTY  
**REGISTER**





## AB-1826 Implemented April 2016

- AB-1826 plans to reduce landfill waste by 50% by 2020 by requiring that recoverable waste must be donated, composted, or recycled.
- Other states requiring recycling of organic materials

Connecticut, Massachusetts, Minnesota, Rhode Island, Vermont



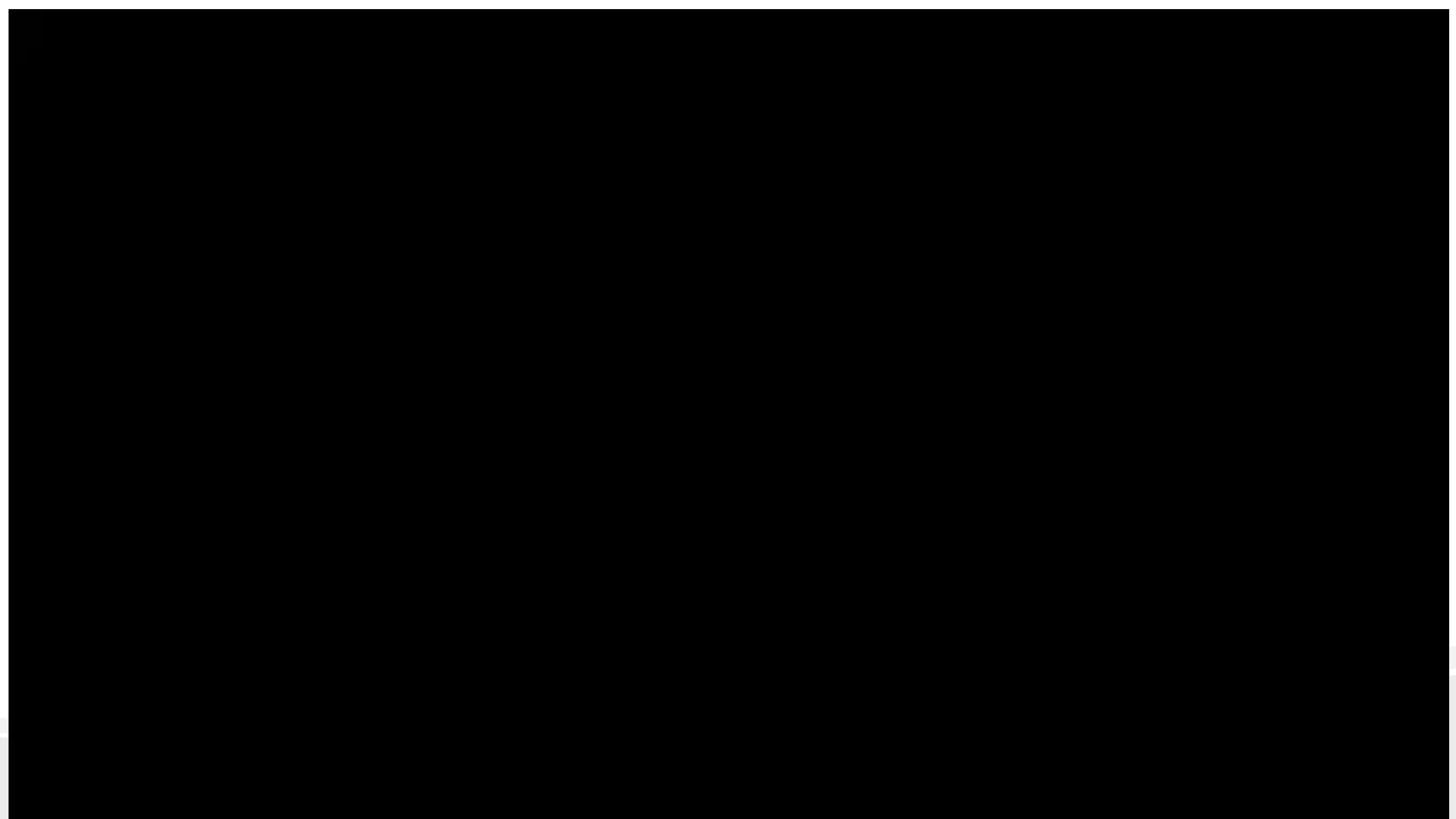
**WHY DON'T WE ASK  
THE QUESTION?**



## **Screening Tool to Determine Level of Food Insecurity**

**Within the past 12 months we worried whether our food would run out before we got money to buy more.**

**Within the past 12 months the food we bought just didn't last and we didn't have money to get more.**





# The American Academy of Pediatrics' Top Priorities 2015-2016

Addressing the Legal and Mental Health Needs of Undocumented Immigrant Children

AAP Terminate Sponsorship(s) on HealthyChildren.org of Companies that Produce Soft Drinks and Sugar-sweetened Beverages

Use of Telehealth to Extend the Pediatric Medical Home

Screening and Toolkit for Poverty

Marijuana Manufacturer Responsibility in Limiting Exposure to Individuals Under Age 21

Sugar-sweetened Beverage Company Sponsorship of the AAP

## **7: Universal Screening for Hunger/Food Insecurity During Office Visits**

Eliminating Triple-digit Payday and Car Title Loans

Prevent Marijuana Exposure for Children

Executive Director Lodging Expenses at District Meetings

# Partnership with Agencies, Hospitals and Clinics

**Children's Hospital of Orange County and Family Resource Centers**

**Over 40,000 Families Screen**

Kaiser

St Joseph and St. Jude Hospitals

Theo Lacy Jail

Anaheim School Pilot



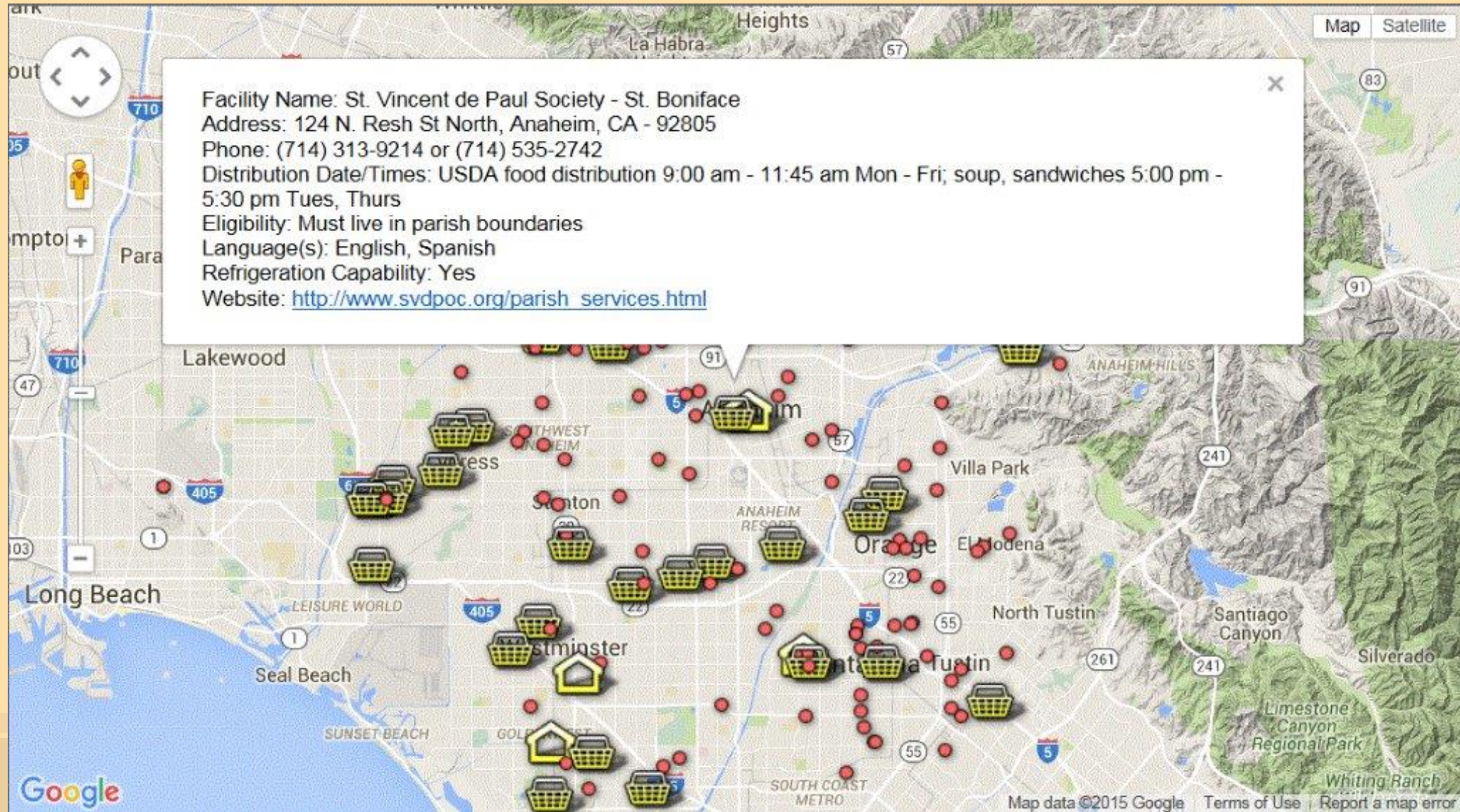
# Partnership with Yellow Cab

Late Night Pick Ups

Anaheim School Pilot August 2016




# Interactive Google Pantry Map of Orange County



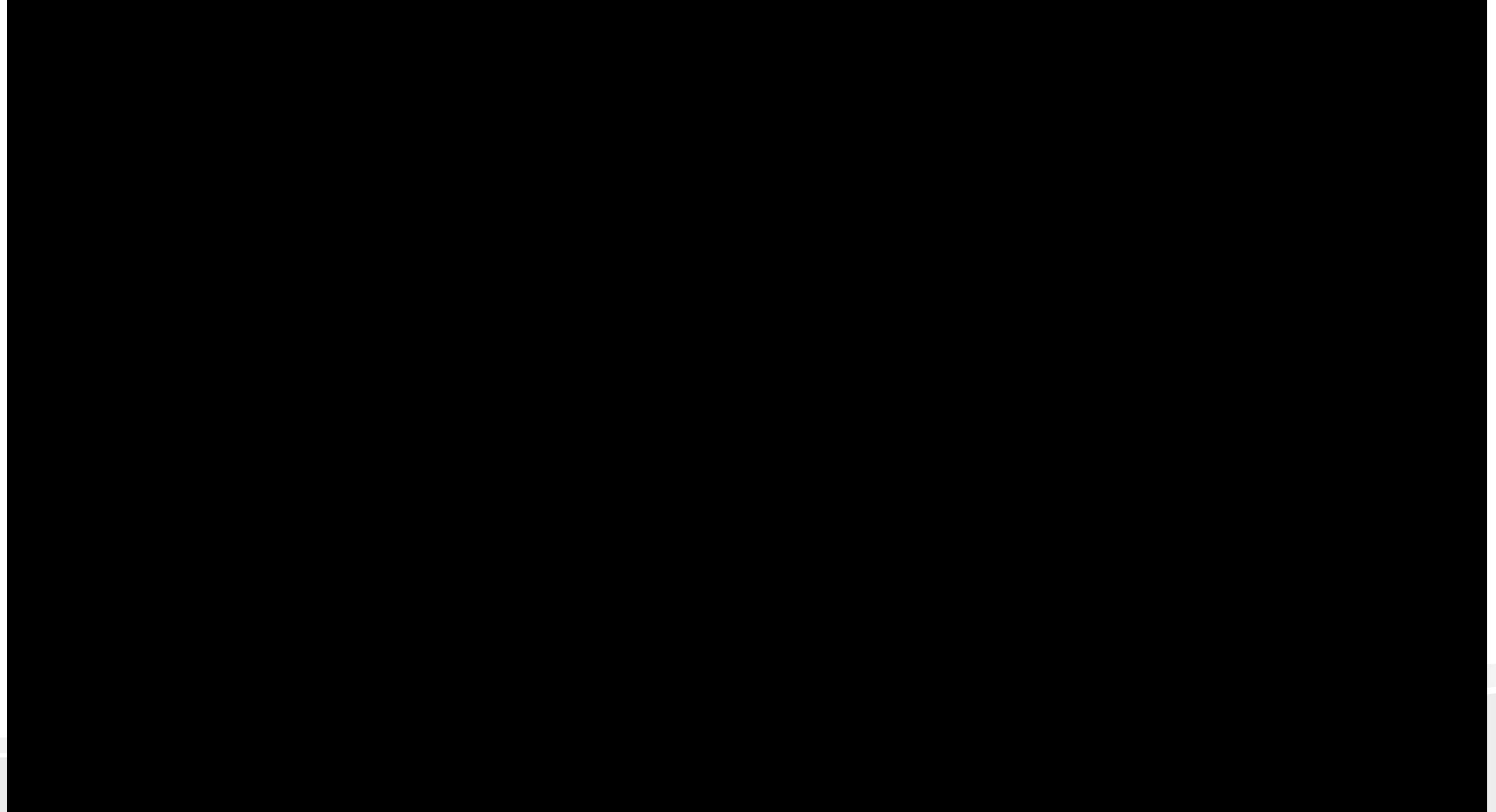


# Significant Milestones

- **Support from United Way of Orange County: \$50,000/year 2014-2016**
- **211 OC: 24-hour information helpline linking to thousands of local health and human service programs in Orange County, CA. Our google pantry map is merged into their web site**
- **National Recognition: APHA, NACCHO, NACo, NEHA, National Geographic, Food Safety Summit**
- **Jurisdictions interested in WNOC: Los Angeles, San Diego, Long Beach, San Bernardino, Kern, Marin, Alameda, Riverside, Harris County, New Haven, CT**



**“This culture of waste has made us insensitive even to the waste and disposal of food, which is even more despicable when all over the world, unfortunately, many individuals and families are suffering from hunger and malnutrition. Once our grandparents were very careful not to throw away any leftover food. Consumerism has led us to become used to an excess and daily waste of food, to which, at times, we are no longer able to give a just value which goes well beyond mere economic parameters. We should all remember, however, that the food we throw away is as if [it were] stolen from the table of the poor, the hungry! I encourage everyone to reflect on the problem of thrown away and wasted food to identify ways and means that, by seriously addressing this issue, are a vehicle of solidarity and sharing with the needy.”**





### **Item: 62.**

distribution of written brochure, "The Facts to Know When Donating Food"; and direct HCA to report back to the Board within six months - All Districts Revised Title to read: