



2009/10 NATIONAL SURVEY OF CHILDREN WITH SPECIAL HEALTH CARE NEEDS

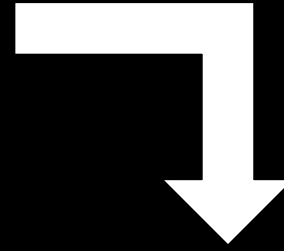
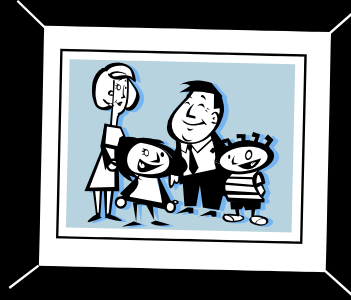
Lindsey Clopp, MSPH Candidate

UCSF Family Health Outcomes Project

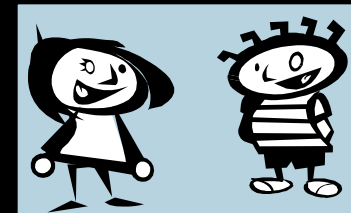
Background

- Sponsored by MCHB, DHHS
 - Conducted by the National Center for Health Statistics, CDC
- Uses a broad definition of Children with Special Health Care Needs (CSCHN):
 - “Those who have a chronic physical, development, behavioral, or emotional condition and who also require health and related services of a type or amount beyond that required by children generally.”

Methods



CSHCN?



Ask NS-CSHCN
Survey Questions



Ask household
demographics



Sample Size

196,159
Households with
children sampled
nationally

40,242
CSHCN
interviews
completed
nationally

372,698
Children screened
for special health
care needs

Comparing National Definition of CSHCN with CA CCS Enrollment

**Children with Special
Health Care Needs
2009/10**

**Estimate Number =
997,157**

**CCS
enrolled
2009 =
158,074**

Topics

- Demographics
- Child's Health and Functional Status
- Health Insurance Coverage
- Health Care Access and Utilization
- Medical Homes
- Early Childhood (0-5 years)
- Middle Childhood and Adolescence (6-17 years)
- Family Functioning
- Parental Health
- Neighborhood and Community Characteristics

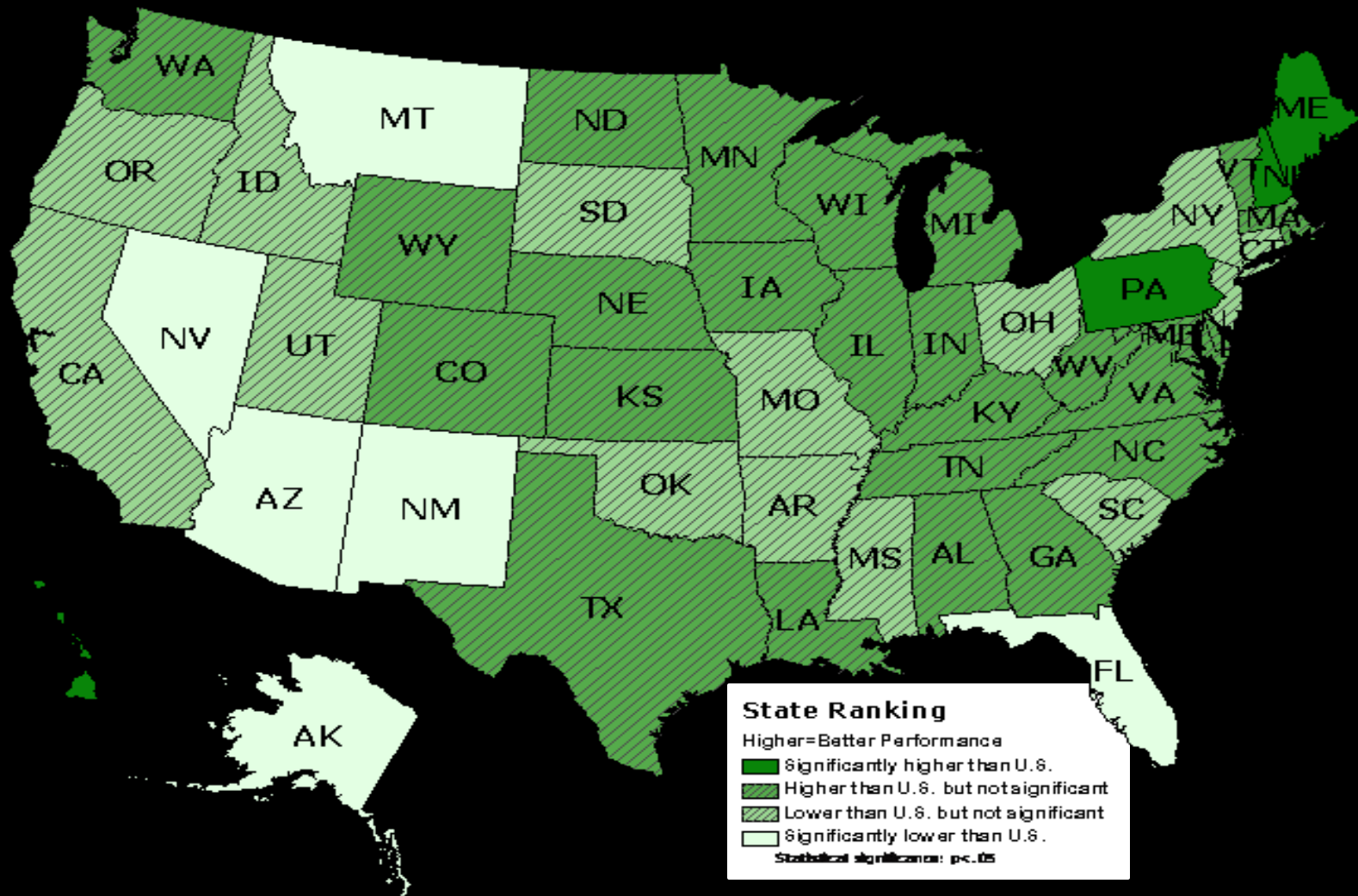
National Indicators

- Child Health
- Health Insurance coverage
- Access to Care
- Family Centered Care
- Impact on Family

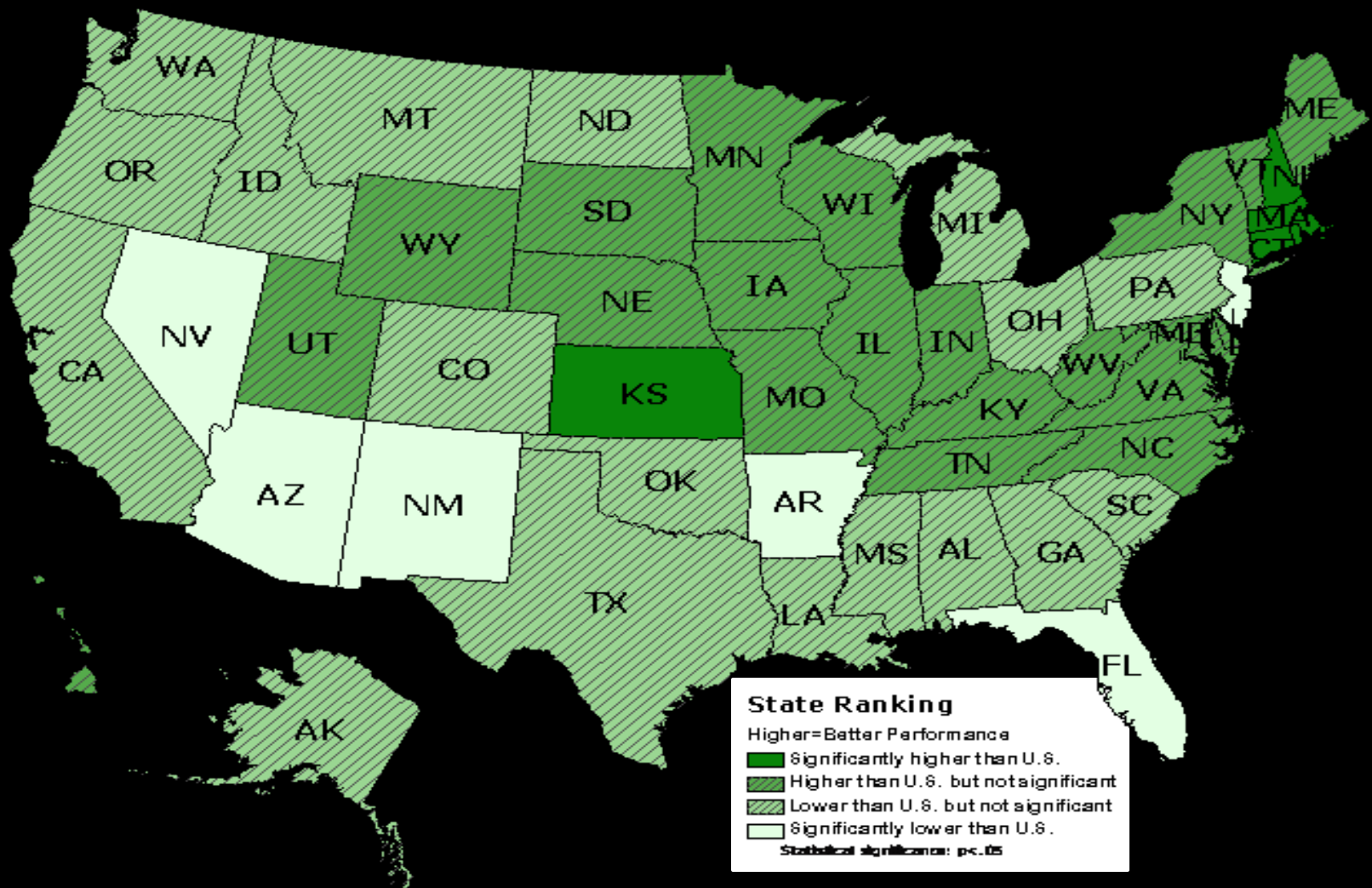
MCHB Core Outcomes

1. Families are partners in decision making and satisfied with services
2. Have a medical home
3. Have adequate private and/or public insurance
4. Screened early and continuously for special health care needs
5. Community-based services are organized for ease of use
6. Receive services needed for transition to adulthood (ages 12-17 only)

States that met first 5 Core Outcomes (CSHCN 0-11 only – excludes outcome 6)



States that met all 6 Core Outcomes (ages 12-17 only)

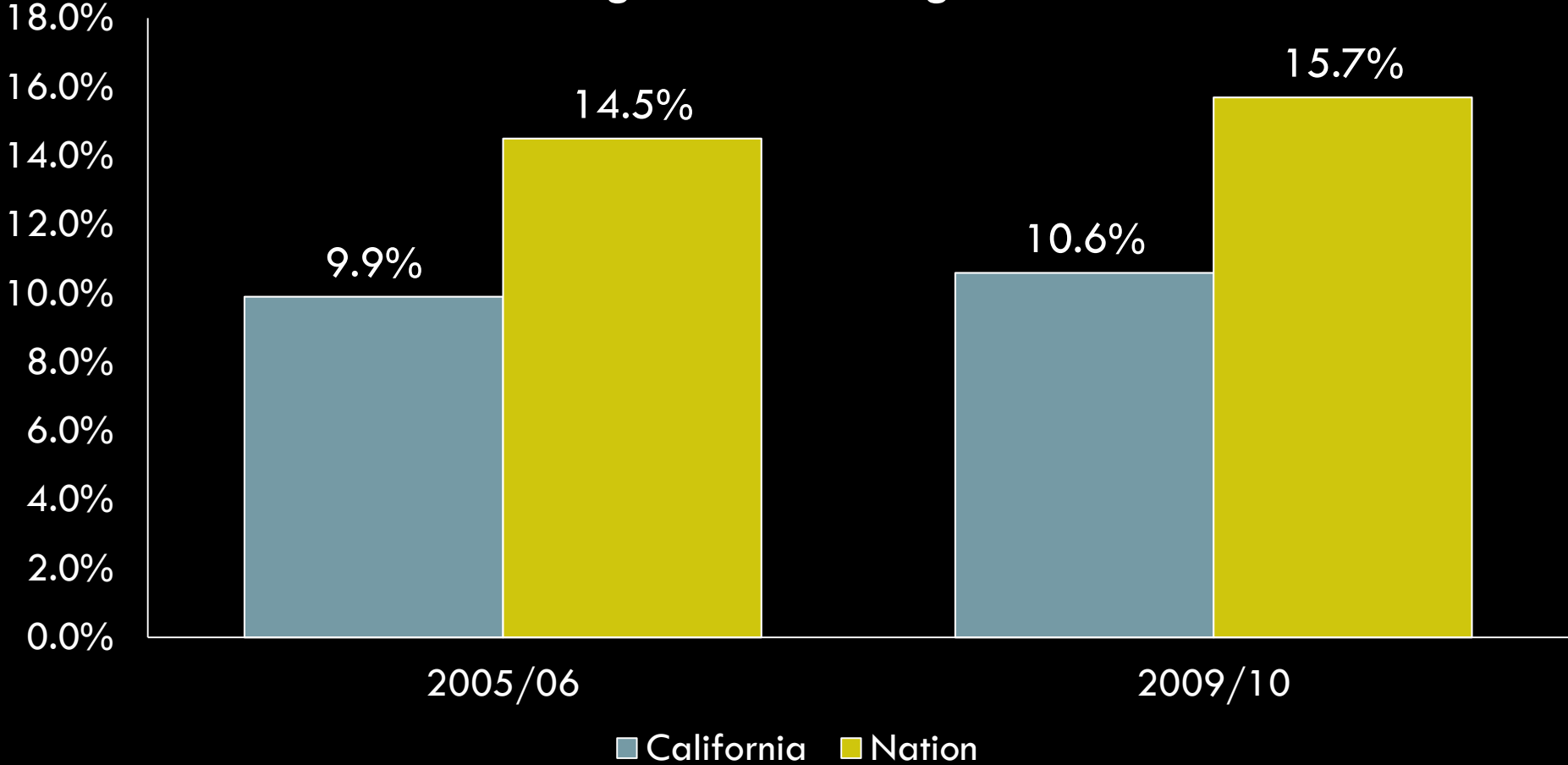


CHILDREN WITH SPECIAL HEALTH CARE NEEDS IN CALIFORNIA

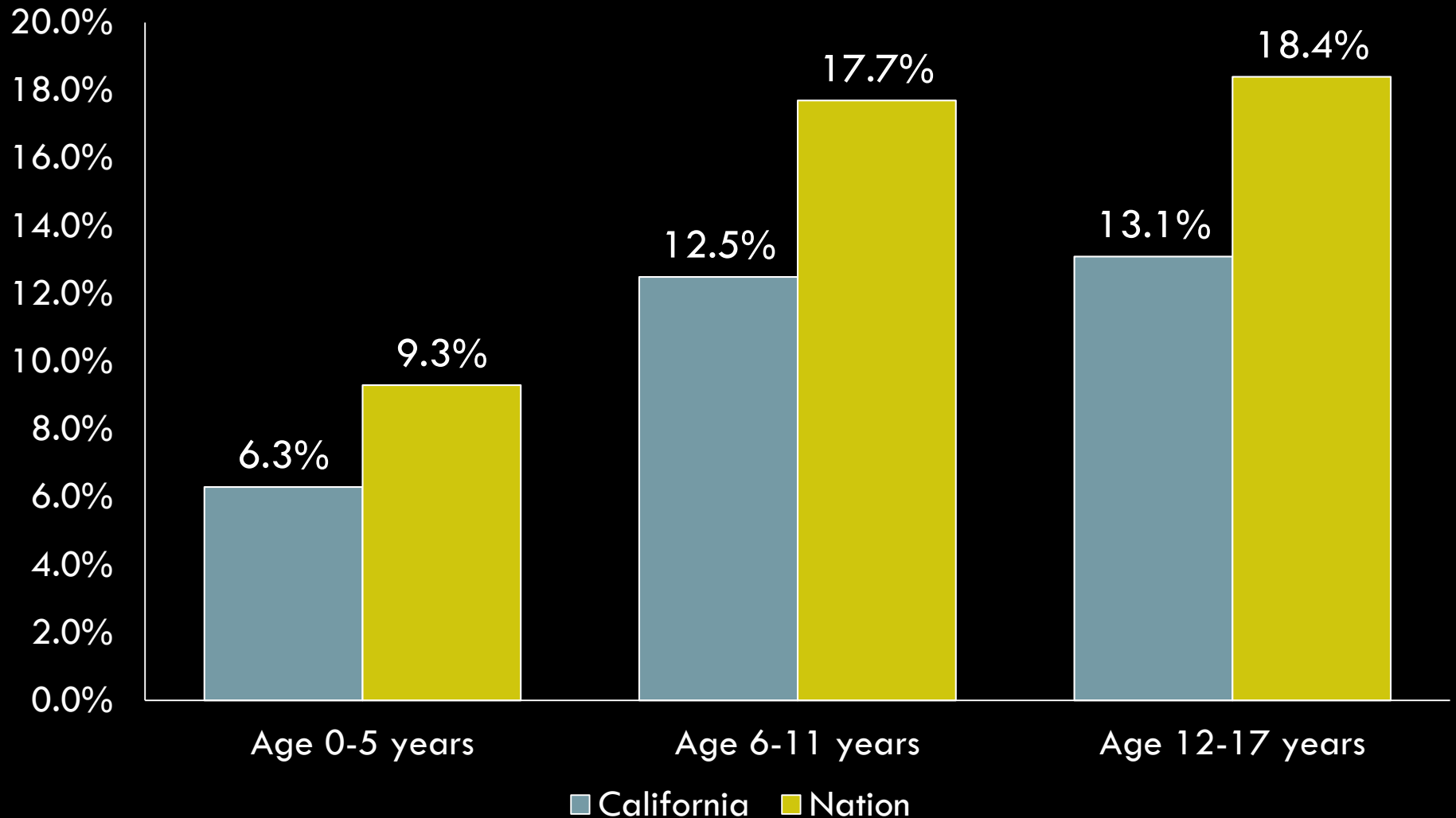
A Lucile Packard Foundation Report, January 2013

Prevalence of CSHCN in CA vs. Nation

**Percentage of Children with Special Health Care Needs
Among All children Ages 0-17**



CSHCN Prevalence by age: CA vs. Nation



Explaining prevalence of CSHCN in CA

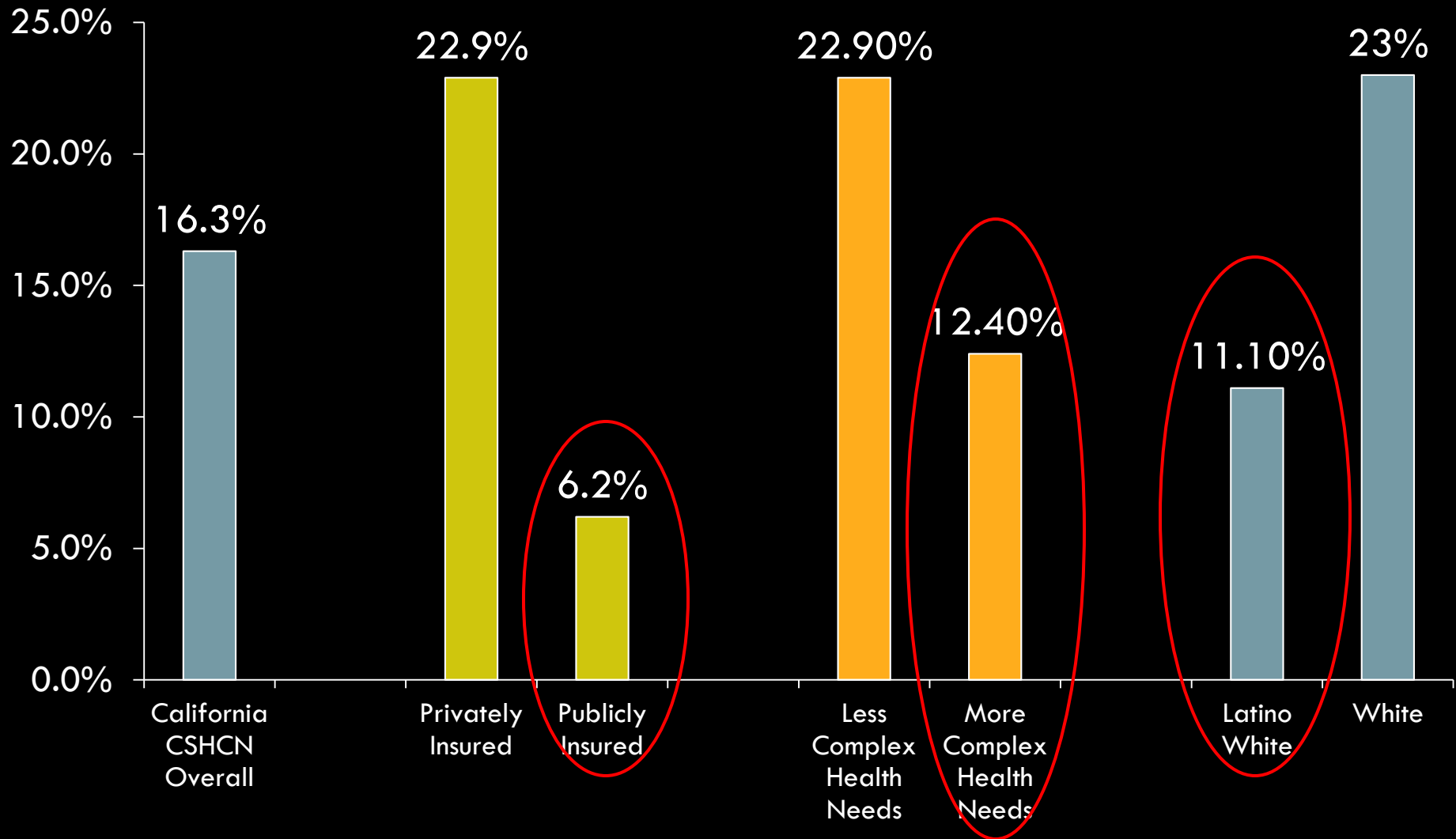
California
CSHCN
Diversity

California vs.
National
Eligibility
Criteria

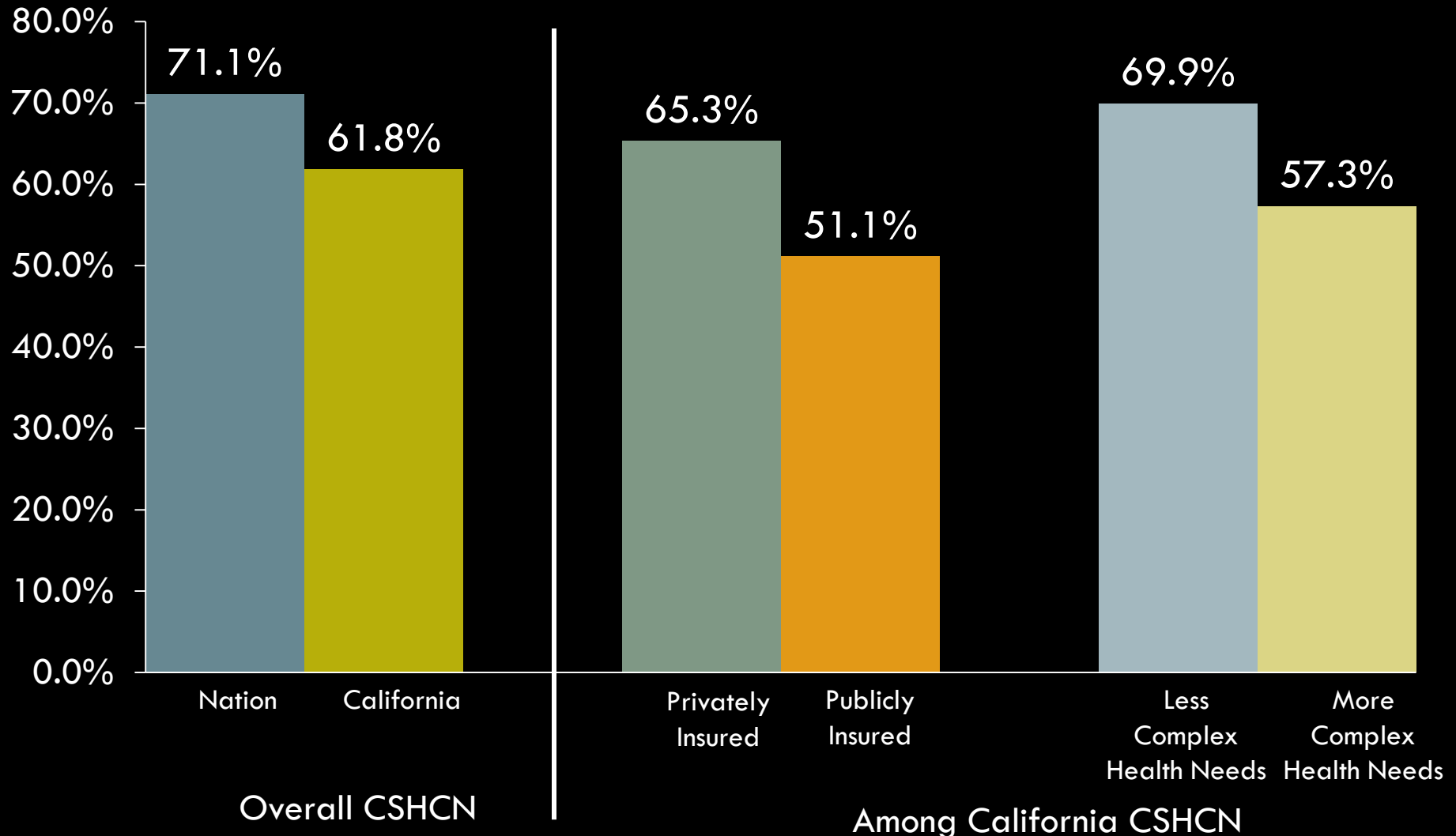
Federal Quality Standards (Core Measures)

1. Shared decision making between families and providers
2. Care within a medical home
3. Consistent and adequate insurance coverage
4. Annual screening through preventive medical/dental visits
5. Access to community –based services
6. Transition planning for adulthood for ages 12-17

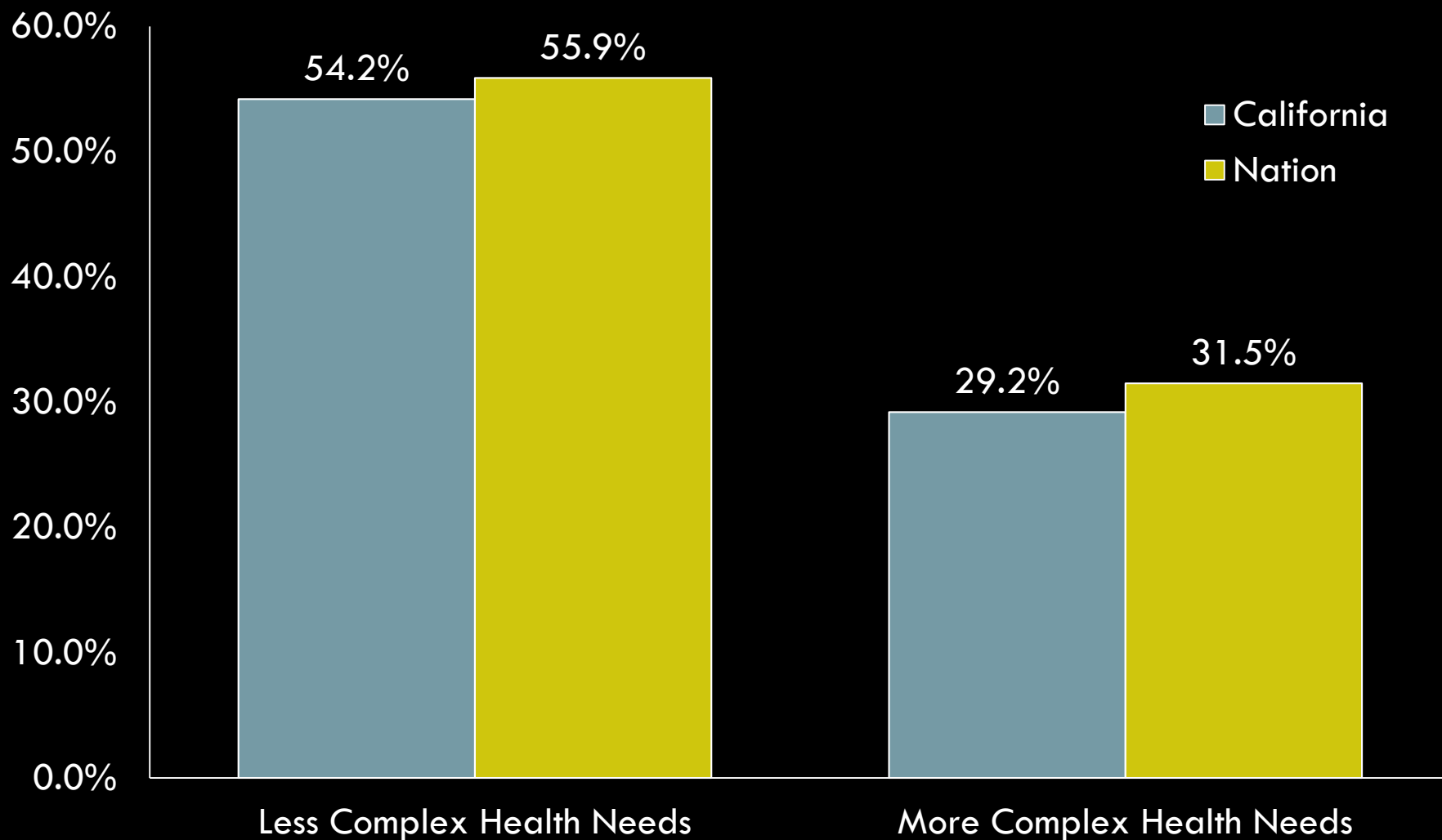
California Children with Special Health Care Needs: Federal Quality Standards



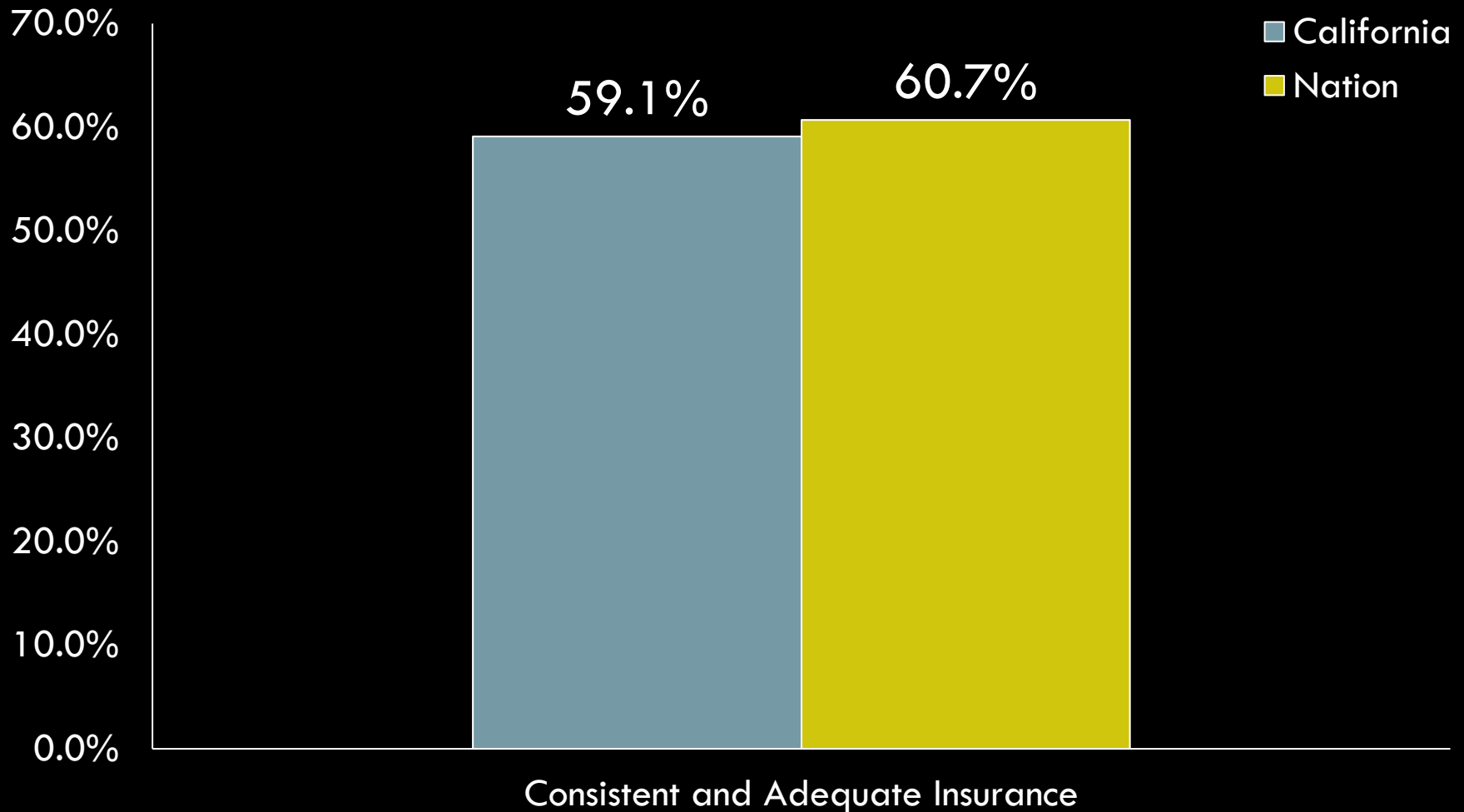
Outcome 1: Shared decision making between families and providers



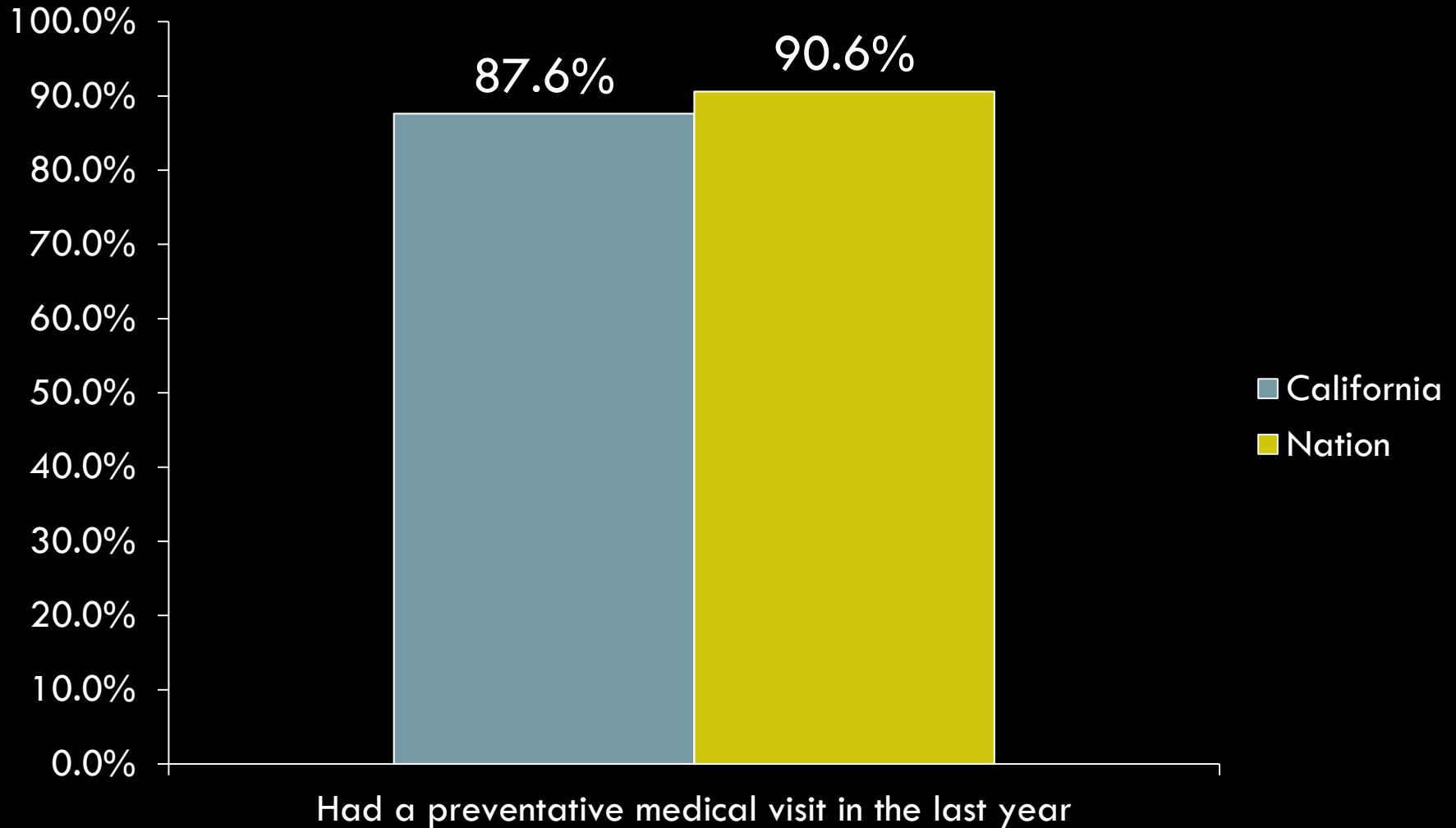
Outcome 2: Care within a medical home



Outcome 3: Consistent and adequate insurance coverage

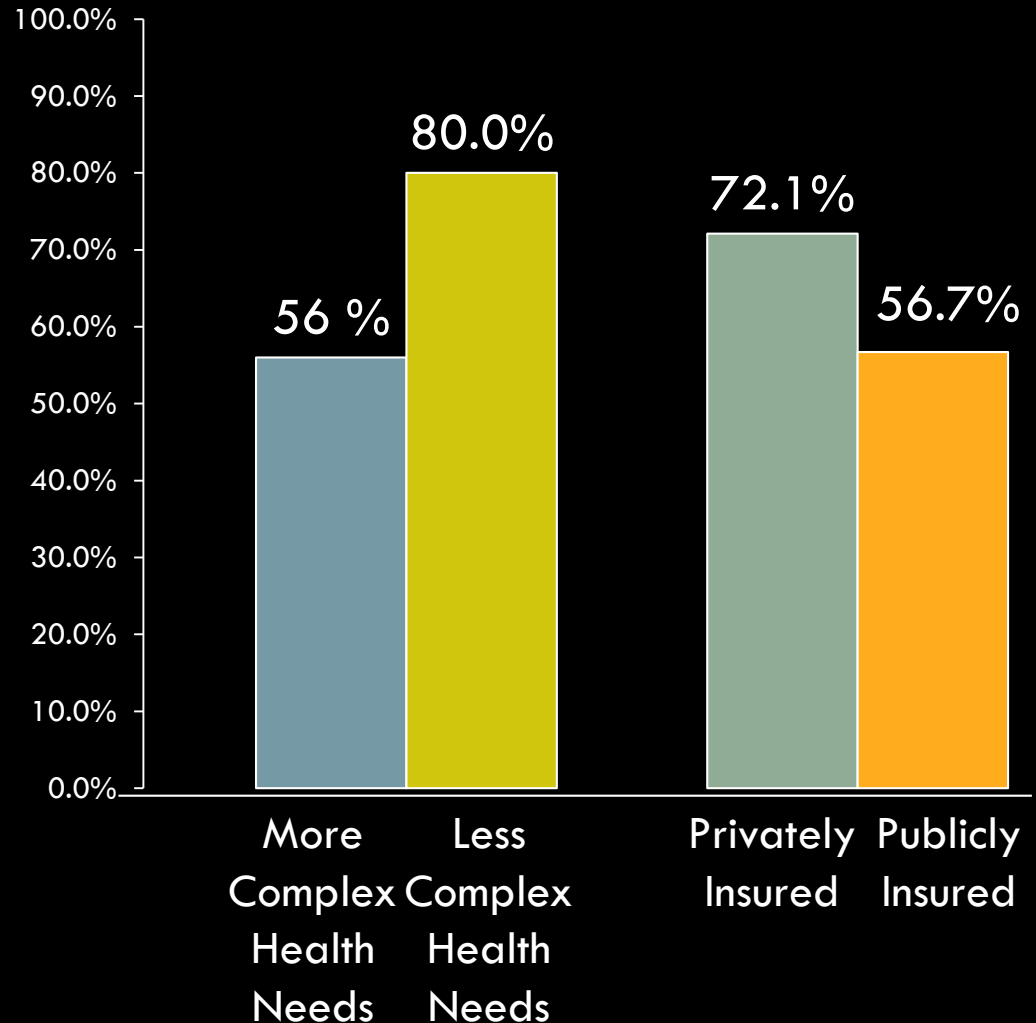


Outcome 4: Annual screening through preventive medical/dental visits



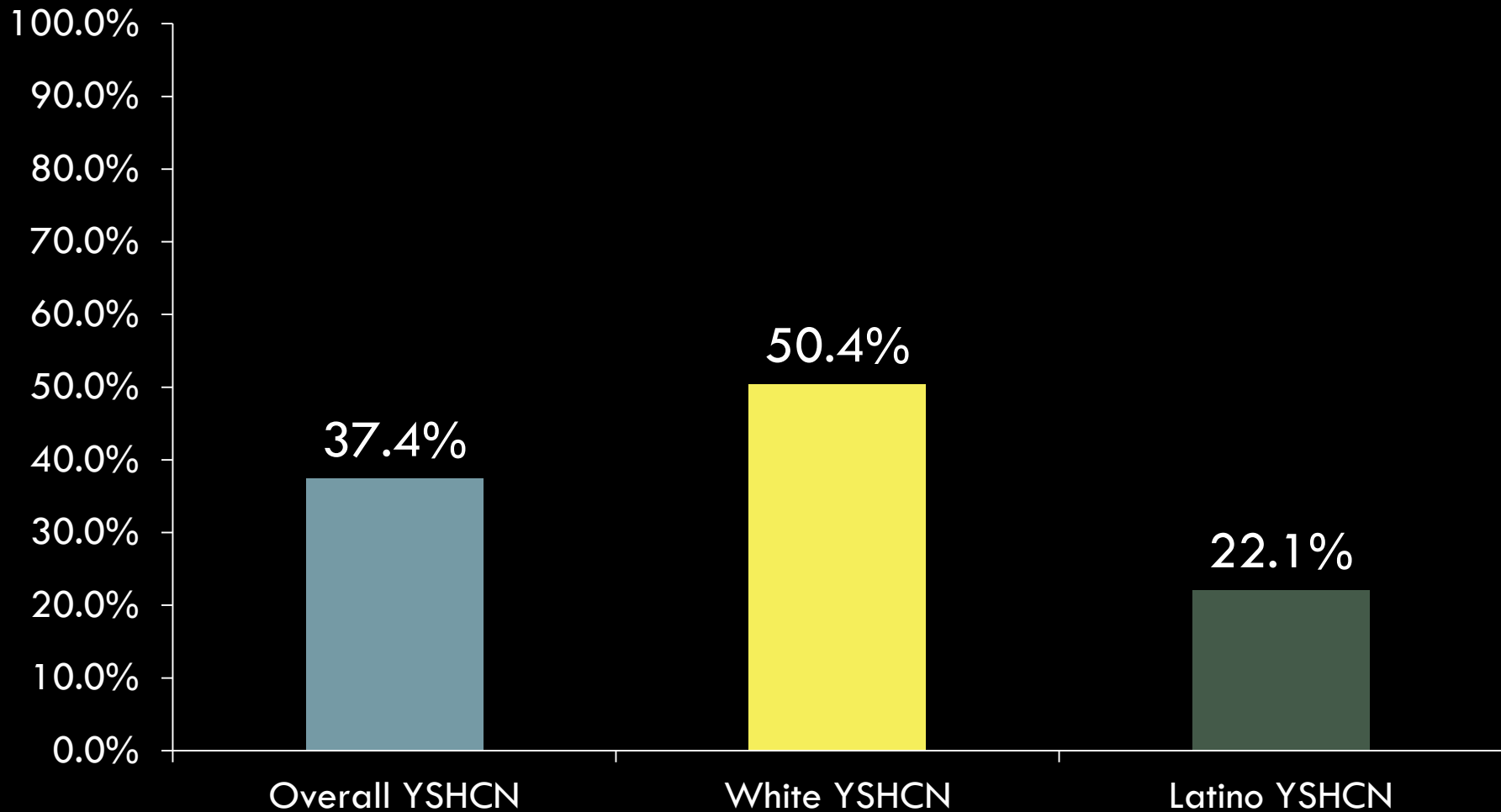
Outcome 5: Access to community – based services

- 65% CSHCN with good access to services
- Disparities exist
 - ▣ More complex health care needs vs. less complex health care needs
 - ▣ Privately vs. public insurance



Outcome 6: Transition planning for adulthood for ages 12-17

Received transition planning



Summary

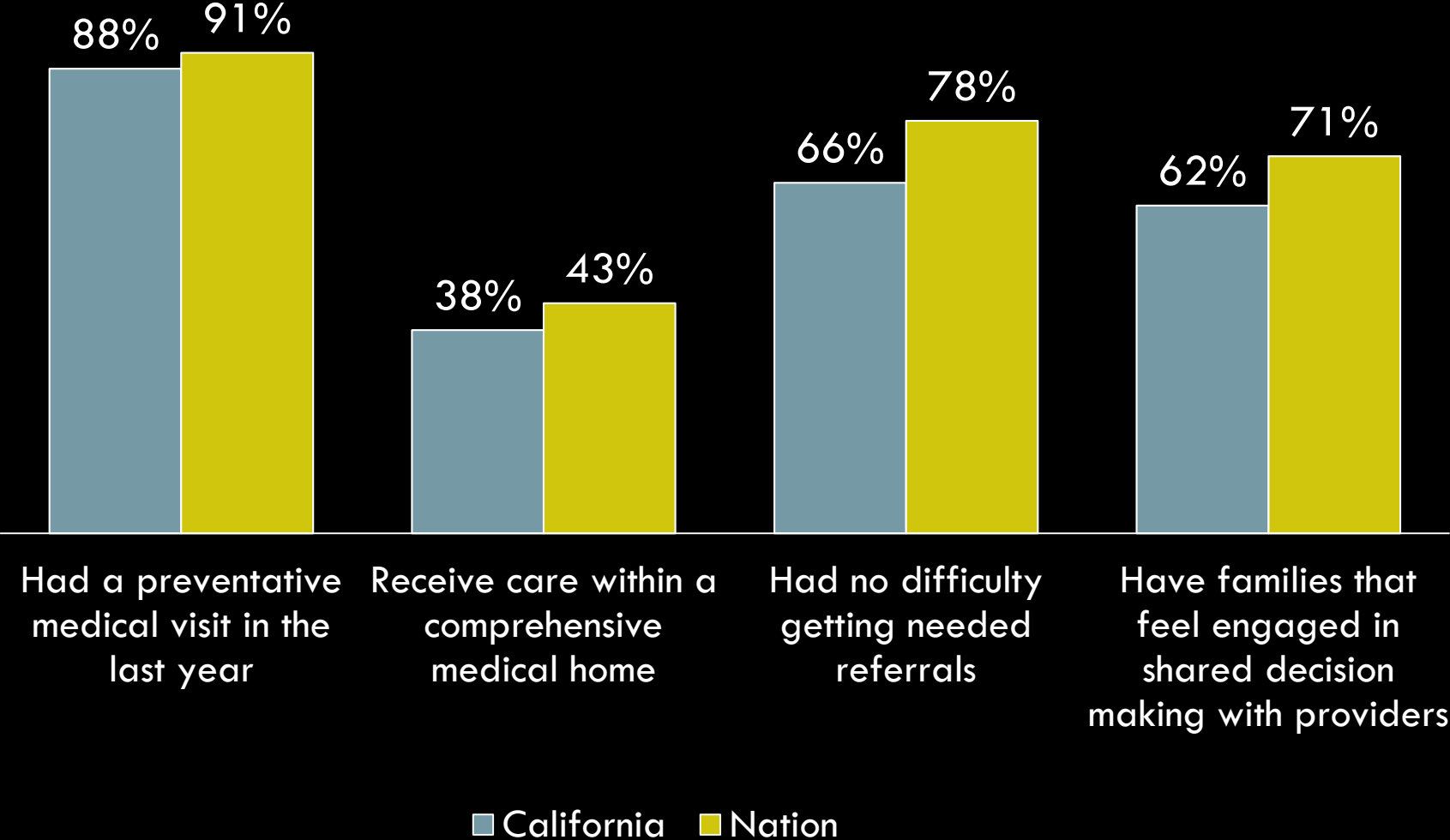
- CA is performing worse than other states across multiple measures
- Diverse population of CSHCN
- Quality of services for CSHCN with more complex needs
- Poor access to care
- Many medical needs currently unmet

References

- Lucile Packard Foundation for Children's Health. (2013). *Children with special health care needs in California*. Retrieved from: <http://lpfch-cshcn.org/publications/research-reports/children-with-special-health-care-needs-in-california-a-profile-of-key-issues/>
- National Survey of Children with Special Health Care Needs 2009/10. Child and Adolescent Health Measurement Initiative, Data Resource Center on Child and Adolescent Health website. Retrieved from: <http://www.childhealthdata.org/learn/NS-CSHCN>

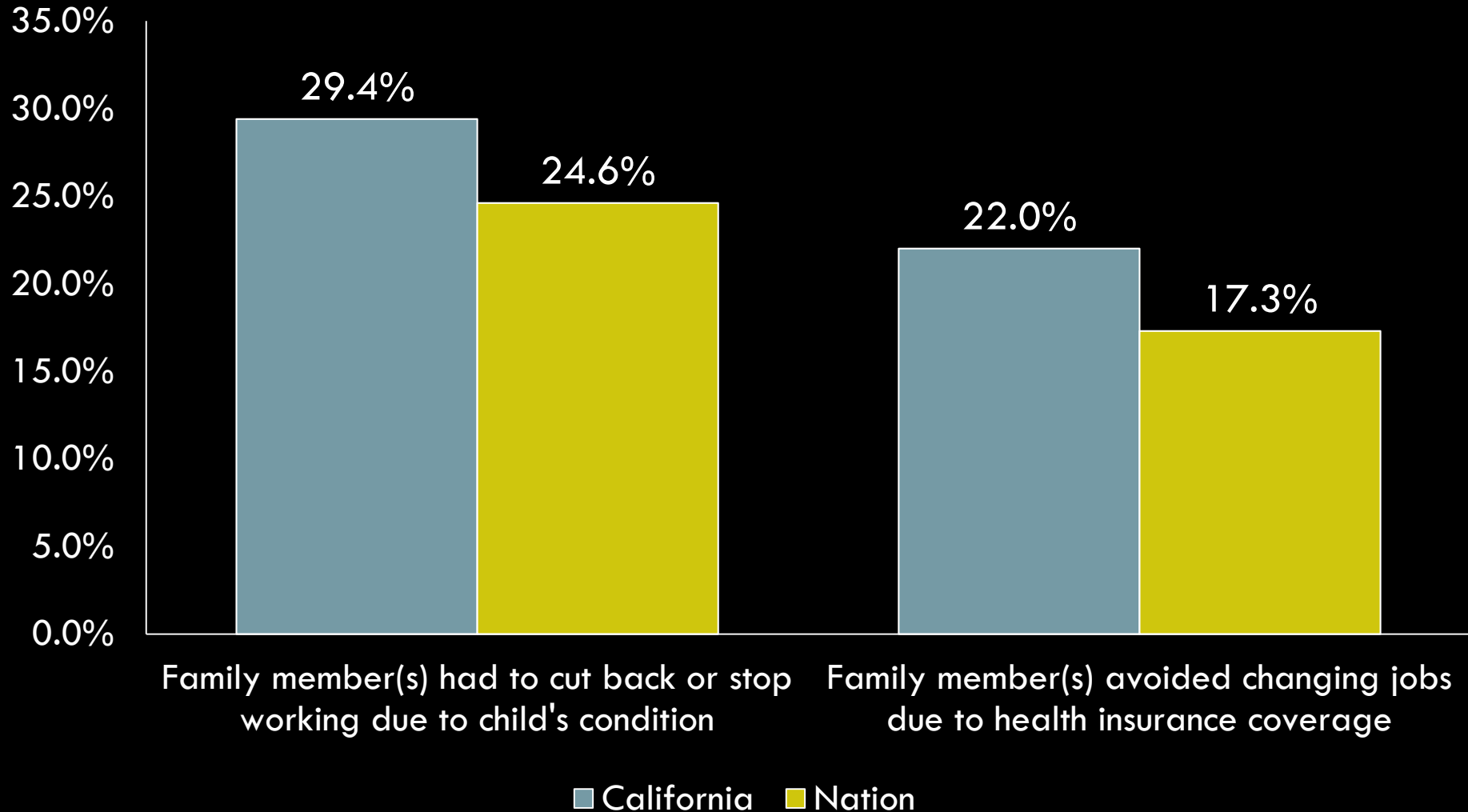
Significant Indicator Differences

CA vs. Nation on Health System Performance



Impact on Children & Families

CA vs. Nation



Indicators by Insurance Type and Complexity of Healthcare Needs

- Impact on daily life
- Access to community-based and comprehensive care
- Impact on families
- Receiving care that meets federal minimum quality standards