

TK-12 School Reopening— Challenges and Successes

David Nunez, MD, MPH

Orange County

March 16, 2021

TK-6 Waivers

- Overwhelming interest and applications
- High level agency involvement
 - Reopening plan review and approval
- Expanded partnerships with academic and health care partners
- Established weekly calls with superintendents from all 25 school districts
- Use of CARES funds
 - Resource development
 - General school support/TA
- Increasing CCI demands, outbreak response

Broader reopening in red tier— Followed by lockdown

- Even more CCI demands
- Transition to school leadership on CCI activities/Additional CARES funds deployed to school nurses
- Continuous updates/translations to resource materials as changes in quarantine guidance and other instructions change

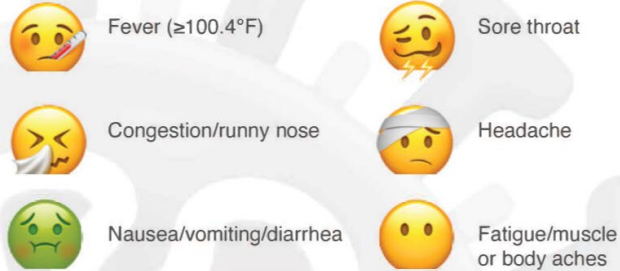
New phase of K-6 reopening applications while in purple tier—Followed by rapid change to red tier

- Streamlined approach to review and approval of CSPs utilizing established partners
- Targeted CSP TA provided to districts in lowest SES communities that remain unopened
- Rapid decline in CCI demands
- Increased CCI related to increasing youth sports
- Vaccine deployment
- Winding down external support
- Reassigning staff to prior program roles

Student Symptom Decision Tree

Screen all students for potential COVID-19 symptoms or exposure

Low-risk: general symptoms

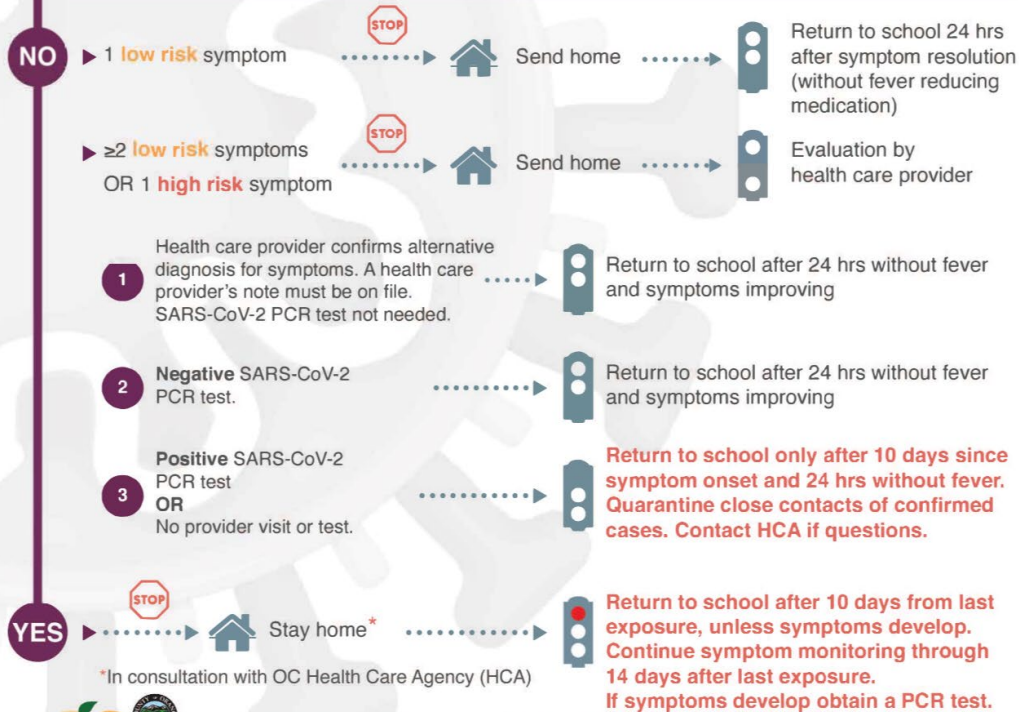


High-risk: red flag symptoms



Exposure to COVID-19 positive person?

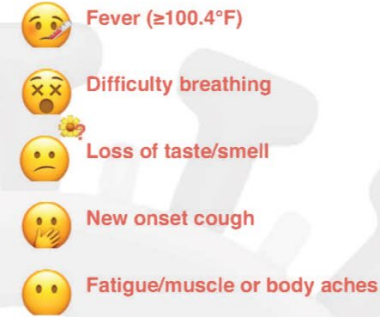
Close contact: Within 6 ft for > 15 minutes cumulative (regardless of mask)



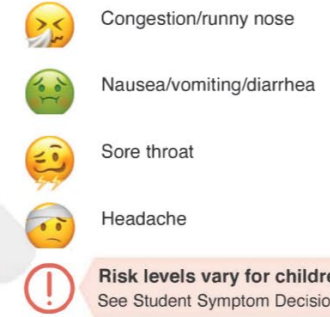
This care pathway was designed to assist school personnel and is not intended to replace the clinician's judgment or establish a protocol for all patients with a particular condition. Diagnosis and treatment should be under the close supervision of a qualified health care provider.

Staff Symptom Decision Tree

High-risk: red flag symptoms



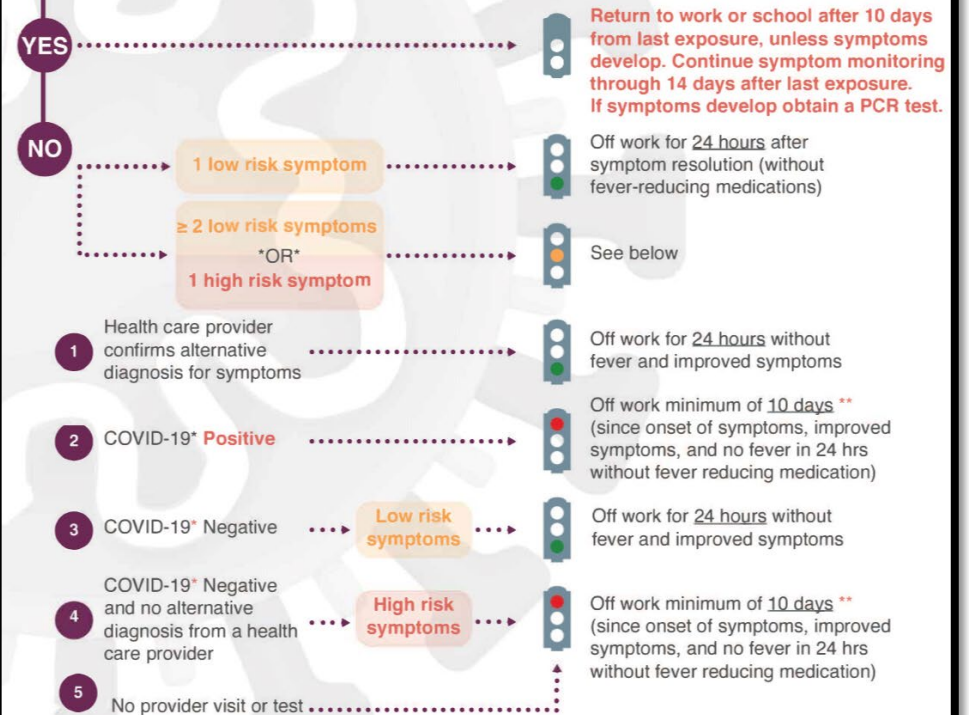
Low-risk: general symptoms



Risk levels vary for children
See Student Symptom Decision Tree

Close contact to COVID-19 positive person?

Close contact: Within 6 ft for > 15 minutes cumulative (regardless of mask)



*PCR or Rapid Antigen, not antibody

**May need staff to be off for up to 20 days.

Recommendations similar for students
See Student Symptom Decision Tree