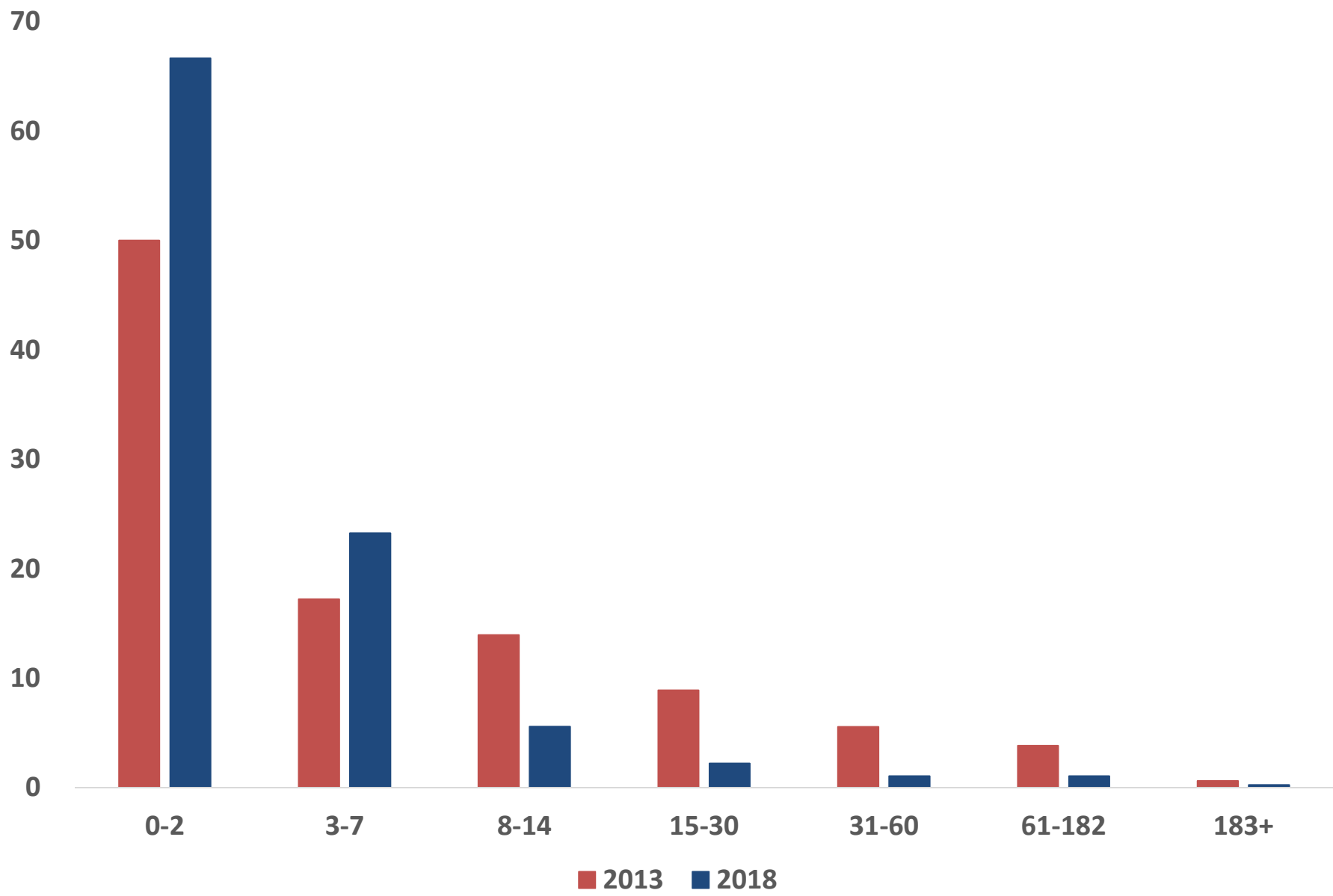


Location	Children	Col %	Days from referral to entry in CMS Net (N)							Days from referral to entry in CMS Net (Row %)						
			0-2	3-7	8-14	15-30	31-60	61-182	183+	0-2	3-7	8-14	15-30	31-60	61-182	183+
State	83,941	100.0	55,951	19,511	4,677	1,842	873	883	204	66.7	23.2	5.6	2.2	1.0	1.1	0.2
Alameda	2,437	2.9	1,911	346	86	59	22	13	0	78.4	14.2	3.5	2.4	0.9	0.5	0.0
Alpine	2	0.0	0	0	0	1	0	1	0	0.0	0.0	0.0	50.0	0.0	50.0	0.0
Amador	63	0.1	53	5	2	3	0	0	0	84.1	7.9	3.2	4.8	0.0	0.0	0.0
Butte	639	0.8	435	172	14	9	5	2	2	68.1	26.9	2.2	1.4	0.8	0.3	0.3
Calaveras	120	0.1	64	20	20	13	2	0	1	53.3	16.7	16.7	10.8	1.7	0.0	0.8
Colusa	90	0.1	66	18	2	1	1	2	0	73.3	20.0	2.2	1.1	1.1	2.2	0.0
Contra Costa	1,826	2.2	1,156	514	95	44	11	4	2	63.3	28.1	5.2	2.4	0.6	0.2	0.1
Del Norte	65	0.1	41	18	4	2	0	0	0	63.1	27.7	6.2	3.1	0.0	0.0	0.0
El Dorado	302	0.4	217	61	8	7	4	4	1	71.9	20.2	2.6	2.3	1.3	1.3	0.3
Fresno	3,624	4.3	2,889	563	50	33	22	49	18	79.7	15.5	1.4	0.9	0.6	1.4	0.5
Glenn	130	0.2	66	42	11	4	1	4	2	50.8	32.3	8.5	3.1	0.8	3.1	1.5
Humboldt	388	0.5	315	51	10	6	2	4	0	81.2	13.1	2.6	1.5	0.5	1.0	0.0
Imperial	752	0.9	445	197	31	25	19	27	8	59.2	26.2	4.1	3.3	2.5	3.6	1.1
Inyo	49	0.1	35	8	5	1	0	0	0	71.4	16.3	10.2	2.0	0.0	0.0	0.0
Kern	2,827	3.4	2,390	343	31	20	10	22	11	84.5	12.1	1.1	0.7	0.4	0.8	0.4
Kings	665	0.8	295	209	77	46	23	11	4	44.4	31.4	11.6	6.9	3.5	1.7	0.6
Lake	186	0.2	126	40	15	4	1	0	0	67.7	21.5	8.1	2.2	0.5	0.0	0.0
Lassen	72	0.1	49	16	5	0	2	0	0	68.1	22.2	6.9	0.0	2.8	0.0	0.0
Los Angeles	19,163	22.8	9,420	6,498	2,342	484	167	201	51	49.2	33.9	12.2	2.5	0.9	1.0	0.3
Madera	606	0.7	307	201	46	19	16	10	7	50.7	33.2	7.6	3.1	2.6	1.7	1.2
Marin	290	0.3	266	13	4	6	0	0	1	91.7	4.5	1.4	2.1	0.0	0.0	0.3
Mariposa	44	0.1	30	11	1	2	0	0	0	68.2	25.0	2.3	4.5	0.0	0.0	0.0
Mendocino	250	0.3	148	73	13	14	1	1	0	59.2	29.2	5.2	5.6	0.4	0.4	0.0
Merced	1,172	1.4	995	122	17	5	11	16	6	84.9	10.4	1.5	0.4	0.9	1.4	0.5
Modoc	28	0.0	6	13	5	0	2	2	0	21.4	46.4	17.9	0.0	7.1	7.1	0.0
Mono	30	0.0	20	6	3	1	0	0	0	66.7	20.0	10.0	3.3	0.0	0.0	0.0
Monterey	1,589	1.9	1,156	327	55	20	23	7	1	72.8	20.6	3.5	1.3	1.4	0.4	0.1
Napa	237	0.3	185	44	5	2	0	0	1	78.1	18.6	2.1	0.8	0.0	0.0	0.4

Location	Children	Col %	Days from referral to entry in CMS Net (N)							Days from referral to entry in CMS Net (Row %)						
			0-2	3-7	8-14	15-30	31-60	61-182	183+	0-2	3-7	8-14	15-30	31-60	61-182	183+
Nevada	239	0.3	162	62	6	5	3	1	0	67.8	25.9	2.5	2.1	1.3	0.4	0.0
Orange	5,304	6.3	3,983	1,071	106	57	40	41	6	75.1	20.2	2.0	1.1	0.8	0.8	0.1
Placer	611	0.7	454	119	21	9	3	4	1	74.3	19.5	3.4	1.5	0.5	0.7	0.2
Plumas	53	0.1	29	13	4	3	3	1	0	54.7	24.5	7.5	5.7	5.7	1.9	0.0
Riverside	6,338	7.6	3,934	1,634	270	163	124	193	20	62.1	25.8	4.3	2.6	2.0	3.0	0.3
Sacramento	2,979	3.5	2,419	377	65	49	33	29	7	81.2	12.7	2.2	1.6	1.1	1.0	0.2
San Benito	178	0.2	45	42	36	38	12	5	0	25.3	23.6	20.2	21.3	6.7	2.8	0.0
San Bernardino	5,606	6.7	4,337	569	336	249	77	32	6	77.4	10.1	6.0	4.4	1.4	0.6	0.1
San Diego	5,109	6.1	3,666	1,109	139	85	57	43	10	71.8	21.7	2.7	1.7	1.1	0.8	0.2
San Francisco	1,155	1.4	933	167	24	18	4	7	2	80.8	14.5	2.1	1.6	0.3	0.6	0.2
San Joaquin	2,606	3.1	1,821	683	51	27	7	9	8	69.9	26.2	2.0	1.0	0.3	0.3	0.3
San Luis Obispo	946	1.1	776	141	18	5	2	4	0	82.0	14.9	1.9	0.5	0.2	0.4	0.0
San Mateo	679	0.8	506	133	21	11	7	1	0	74.5	19.6	3.1	1.6	1.0	0.1	0.0
Santa Barbara	957	1.1	678	212	39	12	7	9	0	70.8	22.2	4.1	1.3	0.7	0.9	0.0
Santa Clara	2,500	3.0	1,715	649	53	45	21	16	1	68.6	26.0	2.1	1.8	0.8	0.6	0.0
Santa Cruz	504	0.6	226	157	52	29	27	12	1	44.8	31.2	10.3	5.8	5.4	2.4	0.2
Shasta	573	0.7	374	161	20	10	6	2	0	65.3	28.1	3.5	1.7	1.0	0.3	0.0
Sierra	3	0.0	1	0	1	0	1	0	0	33.3	0.0	33.3	0.0	33.3	0.0	0.0
Siskiyou	100	0.1	54	30	8	3	4	1	0	54.0	30.0	8.0	3.0	4.0	1.0	0.0
Solano	849	1.0	700	84	20	28	16	1	0	82.4	9.9	2.4	3.3	1.9	0.1	0.0
Sonoma	839	1.0	749	81	5	4	0	0	0	89.3	9.7	0.6	0.5	0.0	0.0	0.0
Stanislaus	2,019	2.4	1,561	344	50	35	13	14	2	77.3	17.0	2.5	1.7	0.6	0.7	0.1
Sutter	408	0.5	291	97	14	3	1	2	0	71.3	23.8	3.4	0.7	0.2	0.5	0.0
Tehama	183	0.2	68	39	26	26	14	9	1	37.2	21.3	14.2	14.2	7.7	4.9	0.5
Trinity	37	0.0	19	13	4	1	0	0	0	51.4	35.1	10.8	2.7	0.0	0.0	0.0
Tulare	2,470	2.9	1,597	664	115	34	17	29	14	64.7	26.9	4.7	1.4	0.7	1.2	0.6
Tuolumne	139	0.2	58	37	26	12	1	4	1	41.7	26.6	18.7	8.6	0.7	2.9	0.7
Ventura	2,169	2.6	1,168	744	165	32	28	25	7	53.8	34.3	7.6	1.5	1.3	1.2	0.3
Yolo	379	0.5	282	69	12	12	0	4	0	74.4	18.2	3.2	3.2	0.0	1.1	0.0
Yuba	363	0.4	259	79	13	6	0	5	1	71.3	21.8	3.6	1.7	0.0	1.4	0.3

Note: Dependent counties are shaded

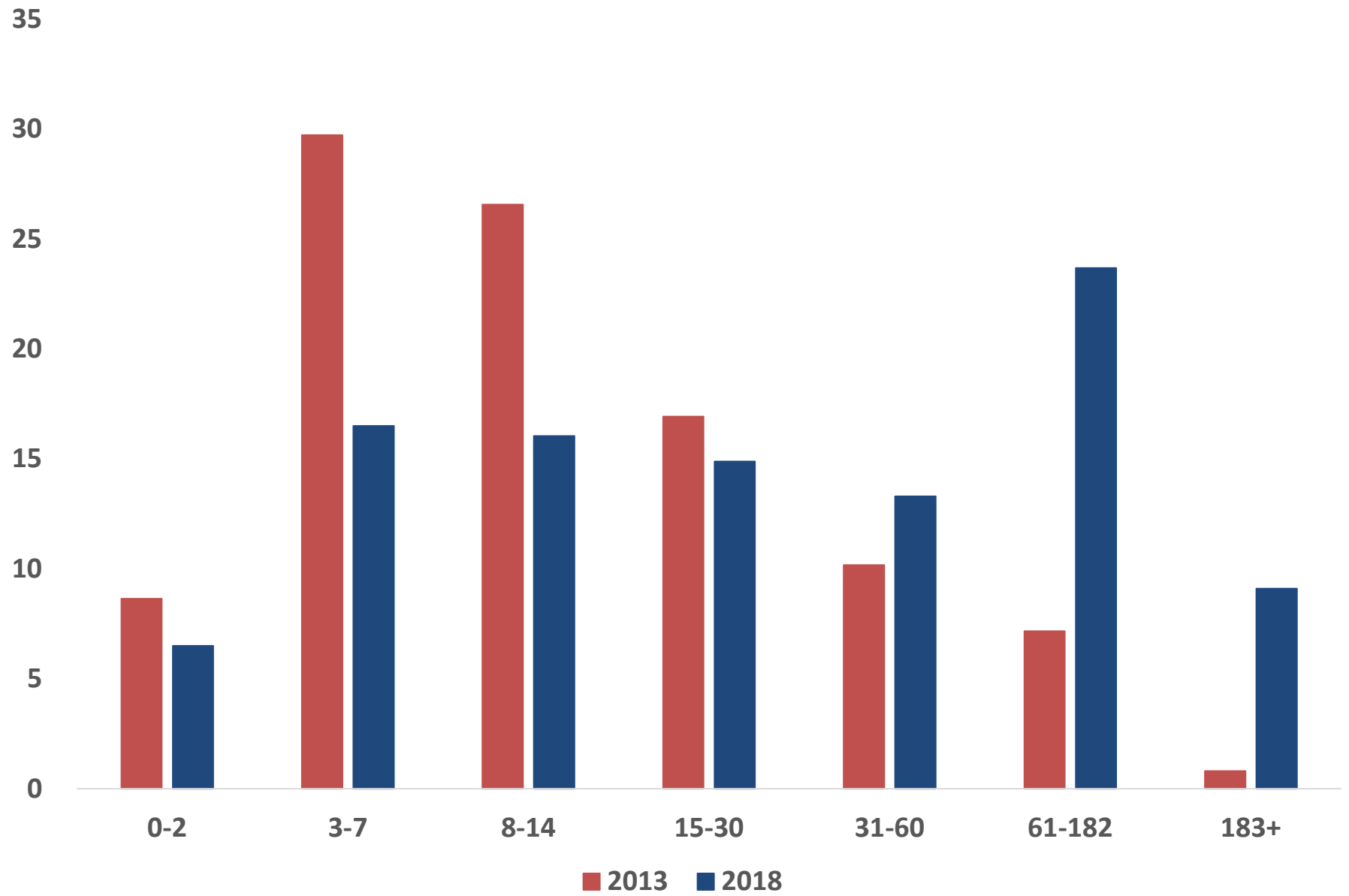
Days from referral to entry in CMS Net(%)



Location	Days	Col %	Days from referral to first authorization (N)							Days from referral to first authorization (Row %)						
			0-2	3-7	8-14	15-30	31-60	61-182	183+	0-2	3-7	8-14	15-30	31-60	61-182	183+
State	181,656	100	11,807	29,975	29,145	27,026	24,147	43,020	16,536	6.5	16.5	16.0	14.9	13.3	23.7	9.1
Alameda	5,673	3.1	251	1,234	1,006	701	665	1,249	567	4.4	21.8	17.7	12.4	11.7	22.0	10.0
Alpine	4	0.0	0	0	0	0	0	3	1	4.4	21.8	17.7	12.4	11.7	75.0	25.0
Amador	142	0.1	11	10	5	22	16	58	20	7.7	7.0	3.5	15.5	11.3	40.8	14.1
Butte	1,350	0.7	182	297	141	149	177	296	108	13.5	22.0	10.4	11.0	13.1	21.9	8.0
Calaveras	244	0.1	8	2	9	25	36	127	37	3.3	0.8	3.7	10.2	14.8	52.0	15.2
Colusa	190	0.1	3	15	8	27	28	90	19	1.6	7.9	4.2	14.2	14.7	47.4	10.0
Contra Costa	4,123	2.3	170	572	858	781	443	926	373	4.1	13.9	20.8	18.9	10.7	22.5	9.0
Del Norte	116	0.1	3	9	13	12	23	45	11	2.6	7.8	11.2	10.3	19.8	38.8	9.5
El Dorado	609	0.3	39	43	44	62	108	229	84	6.4	7.1	7.2	10.2	17.7	37.6	13.8
Fresno	8,760	4.8	1,048	2,167	1,358	938	970	1,630	649	12.0	24.7	15.5	10.7	11.1	18.6	7.4
Glenn	250	0.1	15	13	5	18	56	117	26	6.0	5.2	2.0	7.2	22.4	46.8	10.4
Humboldt	729	0.4	113	131	96	111	84	157	37	15.5	18.0	13.2	15.2	11.5	21.5	5.1
Imperial	1,273	0.7	15	29	14	91	203	733	188	1.2	2.3	1.1	7.1	15.9	57.6	14.8
Inyo	131	0.1	10	8	15	19	22	46	11	7.6	6.1	11.5	14.5	16.8	35.1	8.4
Kern	6,777	3.7	806	1,562	997	681	676	1,443	612	11.9	23.0	14.7	10.0	10.0	21.3	9.0
Kings	1,219	0.7	24	27	50	121	217	665	115	2.0	2.2	4.1	9.9	17.8	54.6	9.4
Lake	506	0.3	16	51	46	69	74	213	37	3.2	10.1	9.1	13.6	14.6	42.1	7.3
Lassen	229	0.1	8	14	19	25	21	106	36	3.5	6.1	8.3	10.9	9.2	46.3	15.7
Los Angeles	45,083	24.8	1,446	6,138	8,369	7,865	6,012	10,596	4,657	3.2	13.6	18.6	17.4	13.3	23.5	10.3
Madera	1,201	0.7	22	36	39	73	227	671	133	1.8	3.0	3.2	6.1	18.9	55.9	11.1
Marin	572	0.3	39	108	100	79	48	133	65	6.8	18.9	17.5	13.8	8.4	23.3	11.4
Mariposa	117	0.1	3	5	6	11	8	53	31	2.6	4.3	5.1	9.4	6.8	45.3	26.5
Mendocino	537	0.3	20	92	95	71	69	138	52	3.7	17.1	17.7	13.2	12.8	25.7	9.7
Merced	1,575	0.9	205	410	183	167	199	320	91	13.0	26.0	11.6	10.6	12.6	20.3	5.8
Modoc	61	0.0	0	6	7	4	8	21	15	13.0	9.8	11.5	6.6	13.1	34.4	24.6
Mono	94	0.1	8	7	5	4	14	47	9	8.5	7.4	5.3	4.3	14.9	50.0	9.6
Monterey	2,561	1.4	96	298	382	576	534	594	81	3.7	11.6	14.9	22.5	20.9	23.2	3.2
Napa	577	0.3	9	57	125	76	81	167	62	1.6	9.9	21.7	13.2	14.0	28.9	10.7
Nevada	404	0.2	28	39	24	26	86	161	40	6.9	9.7	5.9	6.4	21.3	39.9	9.9

Location	Days	Col %	Days from referral to first authorization (N)							Days from referral to first authorization (Row %)						
			0-2	3-7	8-14	15-30	31-60	61-182	183+	0-2	3-7	8-14	15-30	31-60	61-182	183+
Orange	9,499	5.2	344	1,351	2,025	1,907	1,237	1,942	693	3.6	14.2	21.3	20.1	13.0	20.4	7.3
Placer	1,245	0.7	93	218	205	177	164	288	100	7.5	17.5	16.5	14.2	13.2	23.1	8.0
Plumas	98	0.1	8	9	6	9	19	39	8	8.2	9.2	6.1	9.2	19.4	39.8	8.2
Riverside	14,947	8.2	1,008	2,650	2,598	2,070	1,868	3,448	1,305	6.7	17.7	17.4	13.8	12.5	23.1	8.7
Sacramento	6,735	3.7	267	1,062	1,204	978	1,026	1,604	594	4.0	15.8	17.9	14.5	15.2	23.8	8.8
San Benito	284	0.2	4	4	13	26	33	171	33	1.4	1.4	4.6	9.2	11.6	60.2	11.6
San Bernardino	15,810	8.7	2,443	3,050	1,843	1,723	1,829	3,363	1,559	15.5	19.3	11.7	10.9	11.6	21.3	9.9
San Diego	11,844	6.5	603	2,669	1,916	1,576	1,533	2,445	1,102	5.1	22.5	16.2	13.3	12.9	20.6	9.3
San Francisco	1,738	1.0	29	132	306	381	376	366	148	1.7	7.6	17.6	21.9	21.6	21.1	8.5
San Joaquin	4,792	2.6	209	772	736	779	847	1,042	407	4.4	16.1	15.4	16.3	17.7	21.7	8.5
San Luis Obispo	776	0.4	94	156	110	114	117	148	37	12.1	20.1	14.2	14.7	15.1	19.1	4.8
San Mateo	807	0.4	28	145	150	128	105	177	74	3.5	18.0	18.6	15.9	13.0	21.9	9.2
Santa Barbara	1,574	0.9	109	319	334	291	188	269	64	6.9	20.3	21.2	18.5	11.9	17.1	4.1
Santa Clara	6,136	3.4	933	1,623	574	570	637	1,223	576	15.2	26.5	9.4	9.3	10.4	19.9	9.4
Santa Cruz	869	0.5	23	109	143	179	162	192	61	2.6	12.5	16.5	20.6	18.6	22.1	7.0
Shasta	774	0.4	44	83	88	164	139	185	71	5.7	10.7	11.4	21.2	18.0	23.9	9.2
Sierra	7	0.0	0	1	0	3	0	3	0	5.7	14.3	11.4	42.9	18.0	42.9	9.2
Siskiyou	208	0.1	4	5	6	25	35	109	24	1.9	2.4	2.9	12.0	16.8	52.4	11.5
Solano	1,415	0.8	53	207	301	224	183	334	113	3.7	14.6	21.3	15.8	12.9	23.6	8.0
Sonoma	1,280	0.7	111	291	240	152	163	245	78	8.7	22.7	18.8	11.9	12.7	19.1	6.1
Stanislaus	3,173	1.7	162	299	323	444	649	992	304	5.1	9.4	10.2	14.0	20.5	31.3	9.6
Sutter	926	0.5	59	69	51	86	138	460	63	6.4	7.5	5.5	9.3	14.9	49.7	6.8
Tehama	396	0.2	9	17	10	29	66	215	50	2.3	4.3	2.5	7.3	16.7	54.3	12.6
Trinity	107	0.1	3	3	22	5	11	51	12	2.8	2.8	20.6	4.7	10.3	47.7	11.2
Tulare	5,117	2.8	106	497	1,013	1,223	757	1,090	431	2.1	9.7	19.8	23.9	14.8	21.3	8.4
Tuolumne	247	0.1	9	2	6	22	38	149	21	3.6	0.8	2.4	8.9	15.4	60.3	8.5
Ventura	4,293	2.4	323	612	780	799	533	940	306	7.5	14.3	18.2	18.6	12.4	21.9	7.1
Yolo	695	0.4	89	176	91	68	77	145	49	12.8	25.3	13.1	9.8	11.1	20.9	7.1
Yuba	757	0.4	42	64	32	70	112	351	86	5.5	8.5	4.2	9.2	14.8	46.4	11.4

Days from referral to first authorization (%)



CMSNet Data on Administrative Processing Times

Days from SAR request to Authorization

Location	Children	Col %	Days from SAR to authorization (N)							Days from SAR to authorization (Row %)						
			0-2	3-7	8-14	15-30	31-60	61-182	183+	0-2	3-7	8-14	15-30	31-60	61-182	183+
State	111,583	100.0	18,889	19,590	18,942	23,775	16,637	12,129	1,621	16.9	17.6	17.0	21.3	14.9	10.9	1.5
Alameda	3,549	3.2	590	789	734	747	389	230	70	16.6	22.2	20.7	21.0	11.0	6.5	2.0
Alpine	6	0.0	0	0	0	0	2	3	1	0.0	0.0	0.0	0.0	33.3	50.0	16.7
Amador	267	0.2	71	26	24	47	44	55	0	26.6	9.7	9.0	17.6	16.5	20.6	0.0
Butte	1,328	1.2	497	431	210	113	50	19	8	37.4	32.5	15.8	8.5	3.8	1.4	0.6
Calaveras	386	0.3	51	26	34	60	97	115	3	13.2	6.7	8.8	15.5	25.1	29.8	0.8
Colusa	340	0.3	94	31	21	40	48	100	6	27.6	9.1	6.2	11.8	14.1	29.4	1.8
Contra Costa	3,878	3.5	565	736	968	1,106	345	117	41	14.6	19.0	25.0	28.5	8.9	3.0	1.1
Del Norte	209	0.2	35	38	25	39	24	46	2	16.7	18.2	12.0	18.7	11.5	22.0	1.0
El Dorado	1,106	1.0	276	171	114	154	169	214	8	25.0	15.5	10.3	13.9	15.3	19.3	0.7
Fresno	4,848	4.3	610	867	956	1,279	730	353	53	12.6	17.9	19.7	26.4	15.1	7.3	1.1
Glenn	575	0.5	73	49	52	74	127	194	6	12.7	8.5	9.0	12.9	22.1	33.7	1.0
Humboldt	599	0.5	409	112	27	17	16	12	6	68.3	18.7	4.5	2.8	2.7	2.0	1.0
Imperial	3,184	2.9	161	220	278	582	755	1,150	38	5.1	6.9	8.7	18.3	23.7	36.1	1.2
Inyo	222	0.2	21	31	27	51	50	38	4	9.5	14.0	12.2	23.0	22.5	17.1	1.8
Kern	4,685	4.2	610	784	773	989	1,051	403	75	13.0	16.7	16.5	21.1	22.4	8.6	1.6
Kings	1,804	1.6	344	203	162	265	342	455	33	19.1	11.3	9.0	14.7	19.0	25.2	1.8
Lake	725	0.6	216	129	74	94	83	128	1	29.8	17.8	10.2	13.0	11.4	17.7	0.1
Lassen	247	0.2	33	40	44	38	39	51	2	13.4	16.2	17.8	15.4	15.8	20.6	0.8
Los Angeles	10,461	9.4	660	1,035	1,385	2,650	2,572	1,832	327	6.3	9.9	13.2	25.3	24.6	17.5	3.1
Madera	2,049	1.8	332	285	206	323	290	549	64	16.2	13.9	10.1	15.8	14.2	26.8	3.1
Marin	642	0.6	373	132	77	39	13	3	5	58.1	20.6	12.0	6.1	2.0	0.5	0.8
Mariposa	220	0.2	13	24	28	51	38	65	1	5.9	10.9	12.7	23.2	17.3	29.5	0.5
Mendocino	810	0.7	250	217	173	108	48	10	4	30.9	26.8	21.4	13.3	5.9	1.2	0.5
Merced	1,041	0.9	379	340	144	87	48	40	3	36.4	32.7	13.8	8.4	4.6	3.8	0.3
Modoc	89	0.1	20	6	8	15	18	20	2	22.5	6.7	9.0	16.9	20.2	22.5	2.2
Mono	140	0.1	21	12	12	27	28	37	3	15.0	8.6	8.6	19.3	20.0	26.4	2.1
Monterey	1,723	1.5	431	371	278	306	199	130	8	25.0	21.5	16.1	17.8	11.5	7.5	0.5
Napa	943	0.8	310	263	163	125	66	14	2	32.9	27.9	17.3	13.3	7.0	1.5	0.2

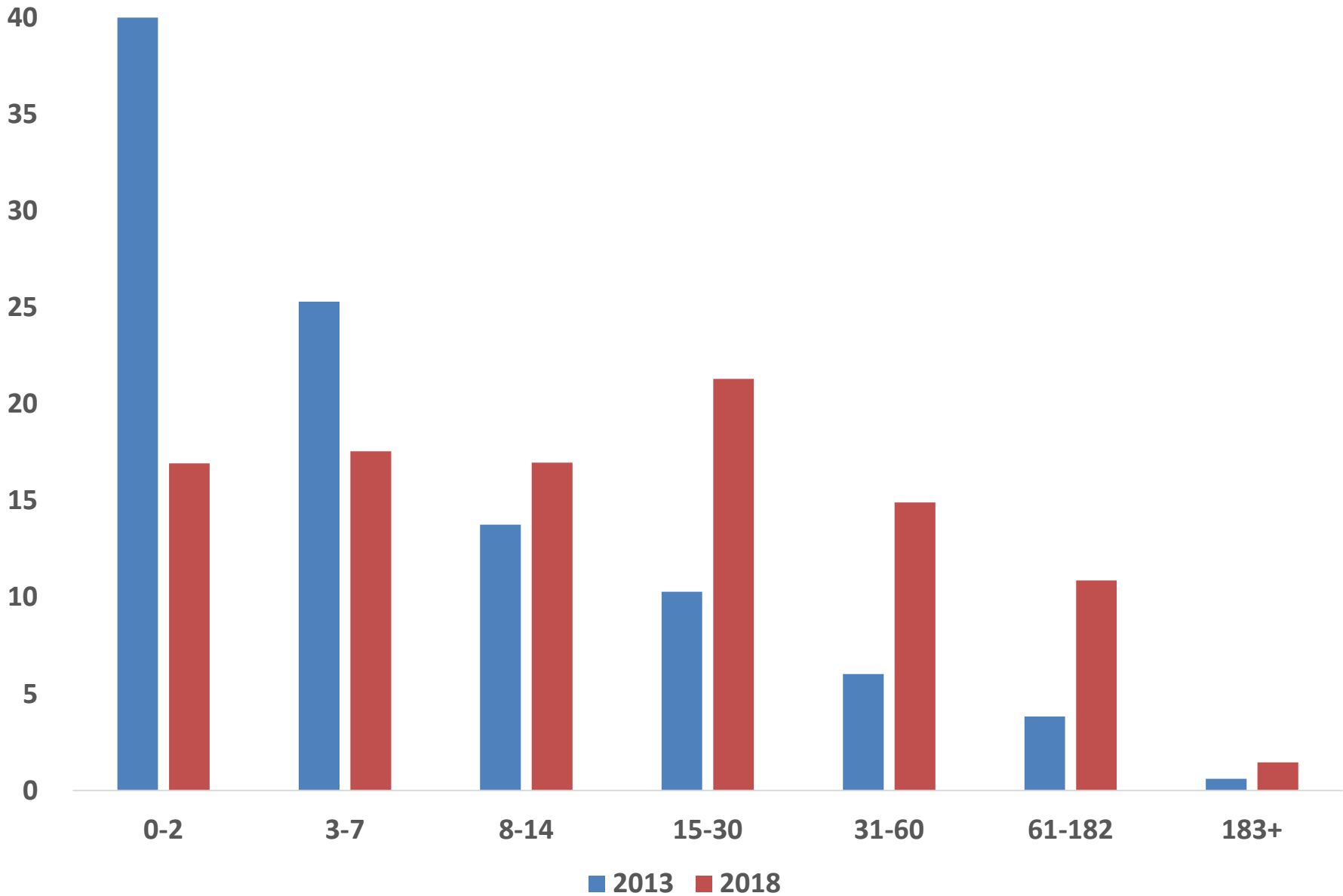
CMSNet Data on Administrative Processing Times

Days from SAR request to Authorization

Location	Children	Col %	Days from SAR to authorization (N)							Days from SAR to authorization (Row %)						
			0-2	3-7	8-14	15-30	31-60	61-182	183+	0-2	3-7	8-14	15-30	31-60	61-182	183+
Nevada	683	0.6	172	77	57	87	105	178	7	25.2	11.3	8.3	12.7	15.4	26.1	1.0
Orange	6,233	5.6	660	972	1,274	1,836	914	493	84	10.6	15.6	20.4	29.5	14.7	7.9	1.3
Placer	1,291	1.2	484	360	221	151	46	25	4	37.5	27.9	17.1	11.7	3.6	1.9	0.3
Plumas	165	0.1	33	35	12	19	27	37	2	20.0	21.2	7.3	11.5	16.4	22.4	1.2
Riverside	5,570	5.0	646	967	1,161	1,370	787	519	120	11.6	17.4	20.8	24.6	14.1	9.3	2.2
Sacramento	3,433	3.1	624	855	730	681	340	173	30	18.2	24.9	21.3	19.8	9.9	5.0	0.9
San Benito	681	0.6	34	35	51	114	132	262	53	5.0	5.1	7.5	16.7	19.4	38.5	7.8
San Bernardino	5,151	4.6	604	906	1,166	1,461	708	247	59	11.7	17.6	22.6	28.4	13.7	4.8	1.1
San Diego	6,728	6.0	642	1,030	1,224	1,824	1,352	531	125	9.5	15.3	18.2	27.1	20.1	7.9	1.9
San Francisco	1,539	1.4	470	303	269	264	177	45	11	30.5	19.7	17.5	17.2	11.5	2.9	0.7
San Joaquin	3,881	3.5	602	822	816	875	571	185	10	15.5	21.2	21.0	22.5	14.7	4.8	0.3
San Luis Obispo	633	0.6	308	151	60	70	31	11	2	48.7	23.9	9.5	11.1	4.9	1.7	0.3
San Mateo	841	0.8	287	245	142	86	50	26	5	34.1	29.1	16.9	10.2	5.9	3.1	0.6
Santa Barbara	1,231	1.1	381	331	236	186	65	31	1	31.0	26.9	19.2	15.1	5.3	2.5	0.1
Santa Clara	3,840	3.4	636	836	814	804	450	249	51	16.6	21.8	21.2	20.9	11.7	6.5	1.3
Santa Cruz	793	0.7	362	217	97	73	36	8	0	45.6	27.4	12.2	9.2	4.5	1.0	0.0
Shasta	1,184	1.1	454	243	162	179	86	59	1	38.3	20.5	13.7	15.1	7.3	5.0	0.1
Sierra	20	0.0	4	4	3	2	4	3	0	20.0	20.0	15.0	10.0	20.0	15.0	0.0
Siskiyou	586	0.5	44	62	61	104	154	156	5	7.5	10.6	10.4	17.7	26.3	26.6	0.9
Solano	1,244	1.1	372	308	260	205	68	30	1	29.9	24.8	20.9	16.5	5.5	2.4	0.1
Sonoma	1,714	1.5	537	417	245	258	165	86	6	31.3	24.3	14.3	15.1	9.6	5.0	0.4
Stanislaus	4,343	3.9	617	695	632	846	804	674	75	14.2	16.0	14.6	19.5	18.5	15.5	1.7
Sutter	1,167	1.0	402	188	107	137	130	199	4	34.4	16.1	9.2	11.7	11.1	17.1	0.3
Tehama	810	0.7	38	62	71	132	174	328	5	4.7	7.7	8.8	16.3	21.5	40.5	0.6
Trinity	153	0.1	25	22	26	28	28	24	0	16.3	14.4	17.0	18.3	18.3	15.7	0.0
Tulare	3,904	3.5	593	763	832	967	490	232	27	15.2	19.5	21.3	24.8	12.6	5.9	0.7
Tuolumne	519	0.5	96	34	35	78	98	164	14	18.5	6.6	6.7	15.0	18.9	31.6	2.7
Ventura	5,127	4.6	639	804	942	1,247	775	593	127	12.5	15.7	18.4	24.3	15.1	11.6	2.5
Yolo	989	0.9	350	254	142	152	78	11	2	35.4	25.7	14.4	15.4	7.9	1.1	0.2
Yuba	1,054	0.9	328	224	97	113	111	167	14	31.1	21.3	9.2	10.7	10.5	15.8	1.3

Note: Dependent counties are shaded

Days from SAR to authorization (%)



Location	Requests	Col %	Days from HHA request to authorization (N)						Days from HHA request to authorization (Row %)						
			0-2	3-7	8-14	15-30	31-60	61-182	0-2	3-7	8-14	15-30	31-60	61-182	183+
State	4,776	100.0	1,198	1,397	672	524	439	457	25.1	29.3	14.1	11.0	9.2	9.6	1.5
Alameda	9	0.2	7	1	0	0	0	1	77.8	11.1	0.0	0.0	0.0	11.1	0.0
Alpine	0	0.0	0	0	0	0	0	0	0.0	0.0	0.0	0.0	0.0	0.0	0.0
Amador	0	0.0	0	0	0	0	0	0	0.0	0.0	0.0	0.0	0.0	0.0	0.0
Butte	28	0.6	10	0	2	2	4	10	35.7	0.0	7.1	7.1	14.3	35.7	0.0
Calaveras	2	0.0	0	0	0	0	2	0	0.0	0.0	0.0	0.0	100.0	0.0	0.0
Colusa	0	0.0	0	0	0	0	0	0	0.0	0.0	0.0	0.0	0.0	0.0	0.0
Contra Costa	48	1.0	9	8	12	6	9	3	18.8	16.7	25.0	12.5	18.8	6.3	2.1
Del Norte	1	0.0	0	0	0	0	1	0	0.0	0.0	0.0	0.0	100.0	0.0	0.0
El Dorado	2	0.0	1	0	1	0	0	0	50.0	0.0	50.0	0.0	0.0	0.0	0.0
Fresno	253	5.3	38	33	51	45	49	33	15.0	13.0	20.2	17.8	19.4	13.0	1.6
Glenn	2	0.0	0	0	0	0	0	2	0.0	0.0	0.0	0.0	0.0	100.0	0.0
Humboldt	0	0.0	0	0	0	0	0	0	0.0	0.0	0.0	0.0	0.0	0.0	0.0
Imperial	13	0.3	4	2	2	0	1	2	30.8	15.4	15.4	0.0	7.7	15.4	15.4
Inyo	0	0.0	0	0	0	0	0	0	0.0	0.0	0.0	0.0	0.0	0.0	0.0
Kern	16	0.3	5	1	1	1	4	4	31.3	6.3	6.3	6.3	25.0	25.0	0.0
Kings	9	0.2	0	0	0	1	2	6	0.0	0.0	0.0	11.1	22.2	66.7	0.0
Lake	0	0.0	0	0	0	0	0	0	0.0	0.0	0.0	0.0	0.0	0.0	0.0
Lassen	0	0.0	0	0	0	0	0	0	0.0	0.0	0.0	0.0	0.0	0.0	0.0
Los Angeles	455	9.5	107	130	75	54	38	45	23.5	28.6	16.5	11.9	8.4	9.9	1.3
Madera	35	0.7	3	3	1	12	8	7	8.6	8.6	2.9	34.3	22.9	20.0	2.9
Marin	0	0.0	0	0	0	0	0	0	0.0	0.0	0.0	0.0	0.0	0.0	0.0
Mariposa	0	0.0	0	0	0	0	0	0	0.0	0.0	0.0	0.0	0.0	0.0	0.0
Mendocino	3	0.1	0	2	1	0	0	0	0.0	66.7	33.3	0.0	0.0	0.0	0.0
Merced	2	0.0	2	0	0	0	0	0	100.0	0.0	0.0	0.0	0.0	0.0	0.0
Modoc	0	0.0	0	0	0	0	0	0	0.0	0.0	0.0	0.0	0.0	0.0	0.0
Mono	0	0.0	0	0	0	0	0	0	0.0	0.0	0.0	0.0	0.0	0.0	0.0
Monterey	176	3.7	45	45	27	13	15	25	25.6	25.6	15.3	7.4	8.5	14.2	3.4

Location	Requests	Col %	Days from HHA request to authorization (N)						Days from HHA request to authorization (Row %)						
			0-2	3-7	8-14	15-30	31-60	61-182	0-2	3-7	8-14	15-30	31-60	61-182	183+
State	4,776	100.0	1,198	1,397	672	524	439	457	25.1	29.3	14.1	11.0	9.2	9.6	1.5
Napa	0	0.0	0	0	0	0	0	0	0.0	0.0	0.0	0.0	0.0	0.0	0.0
Nevada	2	0.0	0	2	0	0	0	0	0.0	100.0	0.0	0.0	0.0	0.0	0.0
Orange	194	4.1	88	28	26	22	13	12	45.4	14.4	13.4	11.3	6.7	6.2	2.6
Placer	4	0.1	0	1	1	0	2	0	0.0	25.0	25.0	0.0	50.0	0.0	0.0
Plumas	0	0.0	0	0	0	0	0	0	0.0	0.0	0.0	0.0	0.0	0.0	0.0
Riverside	528	11.1	162	134	91	60	32	46	30.7	25.4	17.2	11.4	6.1	8.7	0.6
Sacramento	312	6.5	127	99	18	23	31	12	40.7	31.7	5.8	7.4	9.9	3.8	0.6
San Benito	11	0.2	1	2	0	2	2	4	9.1	18.2	0.0	18.2	18.2	36.4	0.0
San Bernardino	567	11.9	130	180	100	71	37	42	22.9	31.7	17.6	12.5	6.5	7.4	1.2
San Diego	1,603	33.6	313	596	212	147	135	170	19.5	37.2	13.2	9.2	8.4	10.6	1.9
San Francisco	0	0.0	0	0	0	0	0	0	0.0	0.0	0.0	0.0	0.0	0.0	0.0
San Joaquin	35	0.7	8	4	4	2	9	6	22.9	11.4	11.4	5.7	25.7	17.1	5.7
San Luis Obispo	10	0.2	4	4	1	1	0	0	40.0	40.0	10.0	10.0	0.0	0.0	0.0
San Mateo	1	0.0	0	1	0	0	0	0	0.0	100.0	0.0	0.0	0.0	0.0	0.0
Santa Barbara	14	0.3	8	2	0	0	1	3	57.1	14.3	0.0	0.0	7.1	21.4	0.0
Santa Clara	214	4.5	40	50	36	40	30	15	18.7	23.4	16.8	18.7	14.0	7.0	1.4
Santa Cruz	106	2.2	44	38	6	6	6	4	41.5	35.8	5.7	5.7	5.7	3.8	1.9
Shasta	19	0.4	4	13	0	0	2	0	21.1	68.4	0.0	0.0	10.5	0.0	0.0
Sierra	0	0.0	0	0	0	0	0	0	0.0	0.0	0.0	0.0	0.0	0.0	0.0
Siskiyou	0	0.0	0	0	0	0	0	0	0.0	0.0	0.0	0.0	0.0	0.0	0.0
Solano	2	0.0	0	1	1	0	0	0	0.0	50.0	50.0	0.0	0.0	0.0	0.0
Sonoma	6	0.1	1	3	0	2	0	0	16.7	50.0	0.0	33.3	0.0	0.0	0.0
Stanislaus	5	0.1	0	1	0	2	1	1	0.0	20.0	0.0	40.0	20.0	20.0	0.0
Sutter	8	0.2	5	3	0	0	0	0	62.5	37.5	0.0	0.0	0.0	0.0	0.0
Tehama	0	0.0	0	0	0	0	0	0	0.0	0.0	0.0	0.0	0.0	0.0	0.0
Trinity	0	0.0	0	0	0	0	0	0	0.0	0.0	0.0	0.0	0.0	0.0	0.0
Tulare	29	0.6	25	2	2	0	0	0	86.2	6.9	6.9	0.0	0.0	0.0	0.0

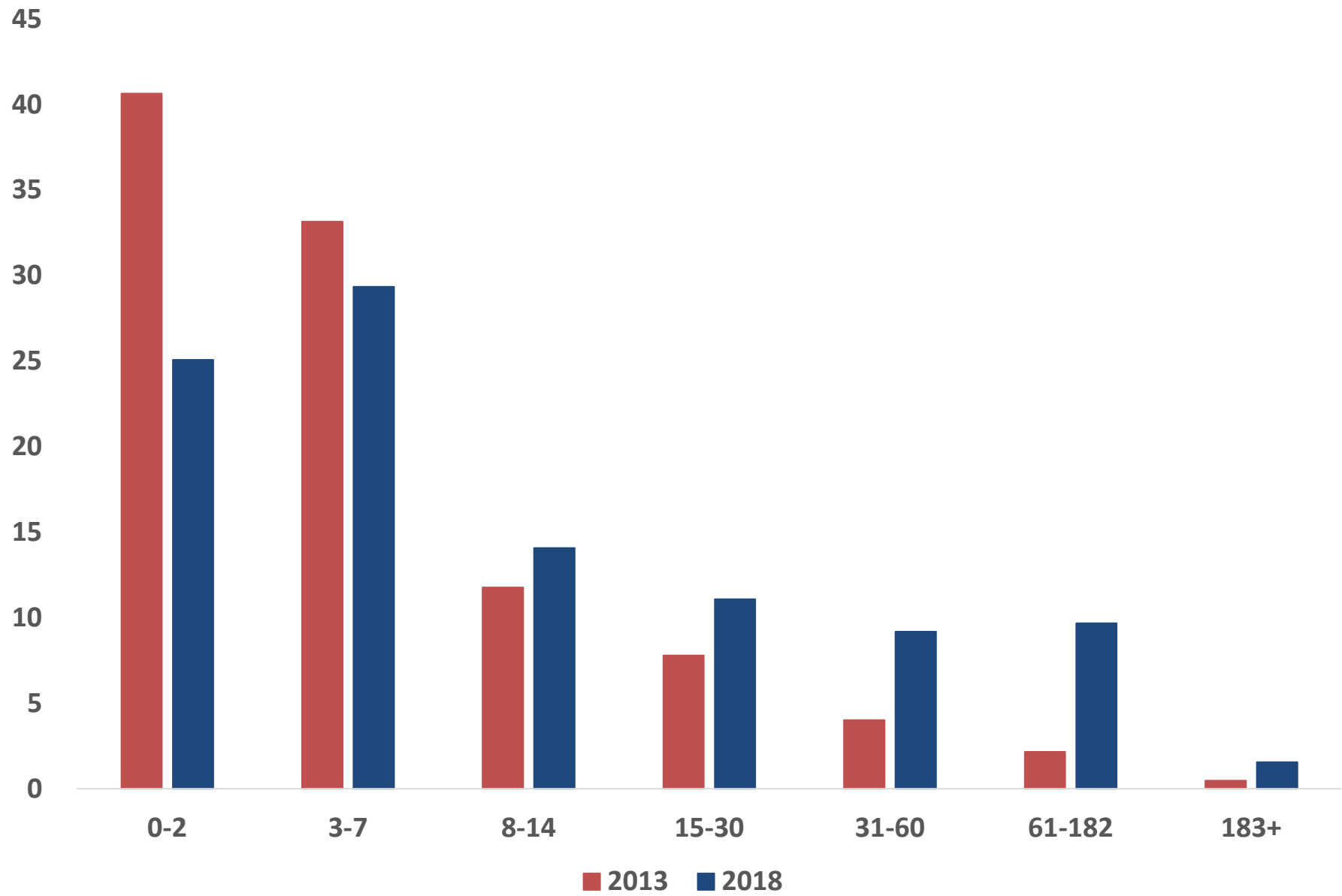
CMSNet Data on Administrative Processing Times

Days from Home Health Assistance (HHA) request to authorization

Location	Requests	Col %	Days from HHA request to authorization (N)						Days from HHA request to authorization (Row %)						
			0-2	3-7	8-14	15-30	31-60	61-182	0-2	3-7	8-14	15-30	31-60	61-182	183+
State	4,776	100.0	1,198	1,397	672	524	439	457	25.1	29.3	14.1	11.0	9.2	9.6	1.5
Tuolumne	0	0.0	0	0	0	0	0	0	0.0	0.0	0.0	0.0	0.0	0.0	0.0
Ventura	27	0.6	3	7	1	8	4	4	11.1	25.9	3.7	29.6	14.8	14.8	0.0
Yolo	10	0.2	4	1	0	4	1	0	40.0	10.0	0.0	40.0	10.0	0.0	0.0
Yuba	15	0.3	0	5	0	5	0	5	0.0	33.3	0.0	33.3	0.0	33.3	0.0

Note: Dependent counties are shaded

Days from HHA request to authorization (%)



CMSNet Data on Administrative Processing Times

Days from wheelchair request to authorization

Location	Requests	Col %	Days from wheelchair request to authorization (N)							Days from wheelchair request to authorization (Row %)						
			0-2	3-7	8-14	15-30	31-60	61-182	183+	0-2	3-7	8-14	15-30	31-60	61-182	183+
State	3,752	100	970	710	521	556	470	432	93	25.9	18.9	13.9	14.8	12.5	11.5	2.5
Alameda	132	3.5	17	27	39	22	13	14	0	13	20.5	29.5	16.7	9.8	10.6	0.0
Alpine	0	0.0	0	0	0	0	0	0	0	0	0.0	0.0	0.0	0.0	0.0	0.0
Amador	5	0.1	0	1	0	2	2	0	0	0.0	20.0	0.0	40.0	40.0	0.0	0.0
Butte	31	0.8	9	7	2	6	3	4	0	29.0	22.6	6.5	19.4	9.7	12.9	0.0
Calaveras	3	0.1	0	0	0	2	0	1	0	0.0	0.0	0.0	66.7	0.0	33.3	0.0
Colusa	3	0.1	0	1	0	0	1	1	0	0.0	33.3	0.0	0.0	33.3	33.3	0.0
Contra Costa	89	2.4	43	15	9	8	6	6	2	48	16.9	10.1	9.0	6.7	6.7	2.2
Del Norte	2	0.1	1	0	1	0	0	0	0	50.0	0.0	50.0	0.0	0.0	0.0	0.0
El Dorado	13	0.3	0	2	0	6	2	2	1	0.0	15.4	0.0	46.2	15.4	15.4	7.7
Fresno	146	3.9	38	32	27	22	16	7	4	26.0	21.9	18.5	15.1	11.0	4.8	2.7
Glenn	4	0.1	0	0	0	0	1	3	0	0.0	0.0	0.0	0.0	25.0	75.0	0.0
Humboldt	4	0.1	3	0	0	0	1	0	0	75.0	0.0	0.0	0.0	25.0	0.0	0.0
Imperial	19	0.5	1	1	0	2	3	10	2	5	5.3	0.0	10.5	15.8	52.6	10.5
Inyo	3	0.1	0	0	0	1	1	1	0	0.0	0.0	0.0	33.3	33.3	33.3	0.0
Kern	153	4.1	63	23	9	14	28	15	1	41.2	15.0	5.9	9.2	18.3	9.8	0.7
Kings	11	0.3	1	4	2	2	1	1	0	9.1	36.4	18.2	18.2	9.1	9.1	0.0
Lake	5	0.1	0	1	1	0	1	2	0	0.0	20.0	20.0	0.0	20.0	40.0	0.0
Lassen	3	0.1	0	0	0	0	2	1	0	0.0	0.0	0.0	0.0	66.7	33.3	0.0
Los Angeles	838	22.3	209	159	102	130	107	108	23	24.9	19.0	12.2	15.5	12.8	12.9	2.7
Madera	13	0.3	1	0	0	0	1	10	1	7.7	0.0	0.0	0.0	7.7	76.9	7.7
Marin	10	0.3	8	1	0	0	0	1	0	80.0	10.0	0.0	0.0	0.0	10.0	0.0
Mariposa	0	0.0	0	0	0	0	0	0	0	0.0	0.0	0.0	0.0	0.0	0.0	0.0
Mendocino	11	0.3	3	3	2	2	0	0	1	27	27.3	18.2	18.2	0.0	0.0	9.1
Merced	23	0.6	7	1	6	2	4	3	0	30.4	4.3	26.1	8.7	17.4	13.0	0.0
Modoc	1	0.0	0	0	0	0	0	1	0	0.0	0.0	0.0	0.0	0.0	100	0.0
Mono	0	0.0	0	0	0	0	0	0	0	0.0	0.0	0.0	0.0	0.0	0.0	0.0
Monterey	35	0.9	24	4	0	1	1	4	1	68.6	11.4	0.0	2.9	2.9	11.4	2.9

CMSNet Data on Administrative Processing Times

Days from wheelchair request to authorization

Location	Requests	Col %	Days from wheelchair request to authorization (N)							Days from wheelchair request to authorization (Row %)						
			0-2	3-7	8-14	15-30	31-60	61-182	183+	0-2	3-7	8-14	15-30	31-60	61-182	183+
State	3,752	100	970	710	521	556	470	432	93	25.9	18.9	13.9	14.8	12.5	11.5	2.5
Napa	12	0.3	2	2	3	1	3	0	1	16.7	16.7	25.0	8.3	25.0	0.0	8.3
Nevada	2	0.1	0	1	0	0	0	1	0	0.0	50.0	0.0	0.0	0.0	50.0	0.0
Orange	250	6.7	69	44	37	29	34	22	15	27.6	17.6	14.8	11.6	13.6	8.8	6.0
Placer	27	0.7	10	4	4	5	2	2	0	37.0	14.8	14.8	18.5	7.4	7.4	0.0
Plumas	4	0.1	0	0	2	0	0	2	0	0.0	0.0	50.0	0.0	0.0	50.0	0.0
Riverside	333	8.9	92	71	37	50	36	33	14	27.6	21.3	11.1	15.0	10.8	9.9	4.2
Sacramento	98	2.6	31	24	11	13	9	8	2	31.6	24.5	11.2	13.3	9.2	8.2	2.0
San Benito	14	0.4	0	0	3	1	6	3	1	0.0	0.0	21.4	7.1	42.9	21.4	7.1
San Bernardino	235	6.3	48	38	33	45	37	29	5	20.4	16.2	14.0	19.1	15.7	12.3	2.1
San Diego	455	12.1	54	104	86	94	48	60	9	11.9	22.9	18.9	20.7	10.5	13.2	2.0
San Francisco	34	0.9	19	2	2	1	8	2	0	55.9	5.9	5.9	2.9	23.5	5.9	0.0
San Joaquin	100	2.7	24	25	23	10	11	6	1	24.0	25.0	23.0	10.0	11.0	6.0	1.0
San Luis Obispo	12	0.3	8	1	0	3	0	0	0	66.7	8.3	0.0	25.0	0.0	0.0	0.0
San Mateo	45	1.2	3	3	10	12	14	3	0	6.7	6.7	22.2	26.7	31.1	6.7	0.0
Santa Barbara	15	0.4	3	4	6	0	1	0	1	20.0	26.7	40.0	0.0	6.7	0.0	6.7
Santa Clara	127	3.4	32	22	19	22	15	14	3	25	17.3	15.0	17.3	11.8	11.0	2.4
Santa Cruz	18	0.5	13	1	2	0	0	2	0	72	5.6	11.1	0.0	0.0	11.1	0.0
Shasta	26	0.7	5	6	3	3	5	3	1	19.2	23.1	11.5	11.5	19.2	11.5	3.8
Sierra	0	0.0	0	0	0	0	0	0	0	0.0	0.0	0.0	0.0	0.0	0.0	0.0
Siskiyou	7	0.2	1	1	0	0	2	2	1	14.3	14.3	0.0	0.0	28.6	28.6	14.3
Solano	24	0.6	5	6	4	4	2	3	0	20.8	25.0	16.7	16.7	8.3	12.5	0.0
Sonoma	32	0.9	23	3	2	3	1	0	0	71.9	9.4	6.3	9.4	3.1	0.0	0.0
Stanislaus	73	1.9	21	16	9	11	9	7	0	29	21.9	12.3	15.1	12.3	9.6	0.0
Sutter	13	0.3	5	1	1	0	2	4	0	38.5	7.7	7.7	0.0	15.4	30.8	0.0
Tehama	8	0.2	0	0	0	1	2	5	0	0.0	0.0	0.0	12.5	25.0	62.5	0.0
Trinity	2	0.1	0	1	1	0	0	0	0	0.0	50.0	50.0	0.0	0.0	0.0	0.0
Tulare	90	2.4	34	22	12	10	9	3	0	37.8	24.4	13.3	11.1	10.0	3.3	0.0

CMSNet Data on Administrative Processing Times

Days from wheelchair request to authorization

Location	Requests	Col %	Days from wheelchair request to authorization (N)							Days from wheelchair request to authorization (Row %)						
			0-2	3-7	8-14	15-30	31-60	61-182	183+	0-2	3-7	8-14	15-30	31-60	61-182	183+
State	3,752	100	970	710	521	556	470	432	93	25.9	18.9	13.9	14.8	12.5	11.5	2.5
Tuolumne	8	0.2	1	1	1	0	2	3	0	12.5	12.5	12.5	0.0	25.0	37.5	0.0
Ventura	107	2.9	31	18	9	14	15	17	3	29.0	16.8	8.4	13.1	14.0	15.9	2.8
Yolo	16	0.4	7	6	1	1	1	0	0	43.8	37.5	6.3	6.3	6.3	0.0	0.0
Yuba	8	0.2	1	1	0	1	2	3	0	12.5	12.5	0.0	12.5	25.0	37.5	0.0

Note: Dependent counties are shaded

Days from wheelchair request to authorization (%)

