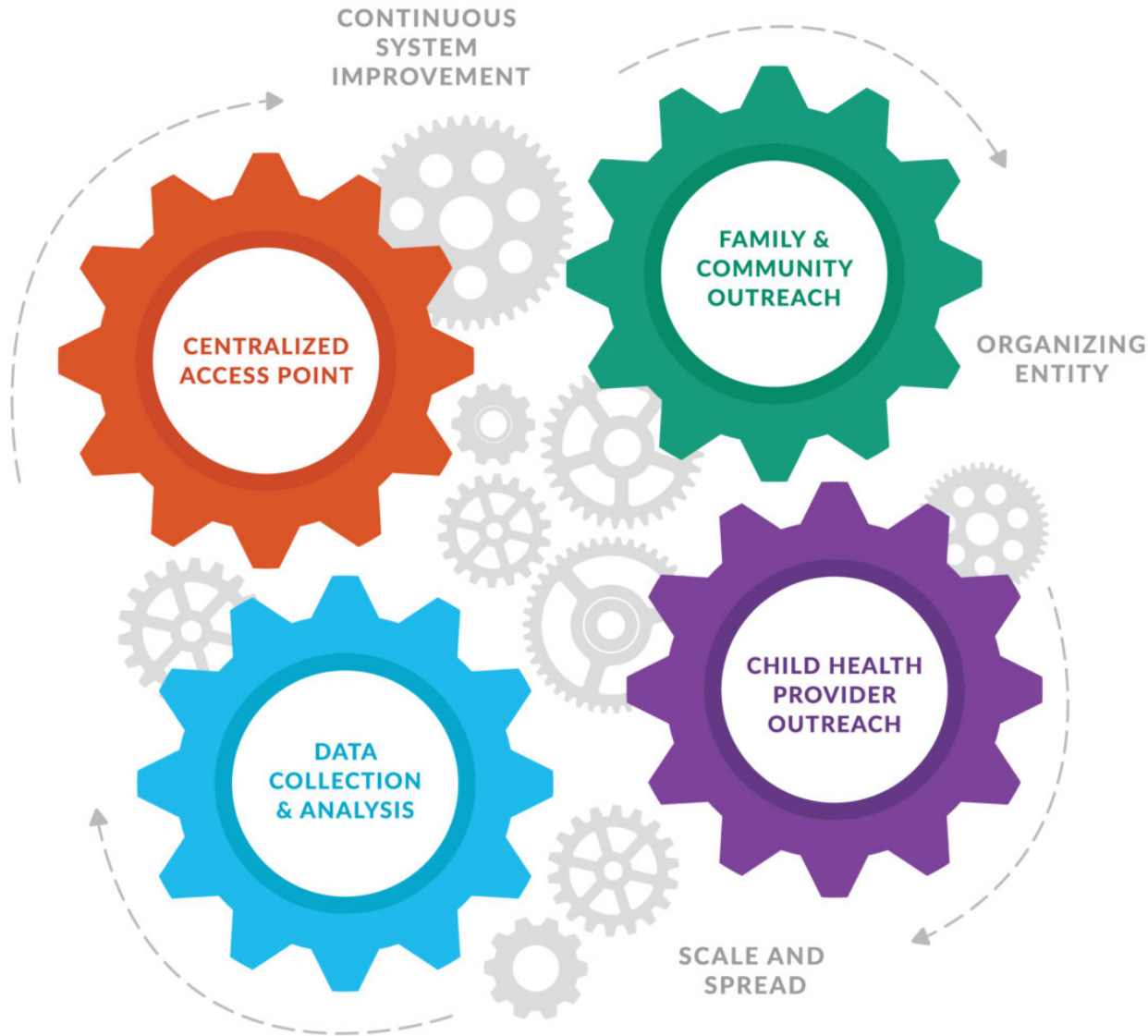


SYSTEM MODEL





# Help Me Grow Yolo County Centralized Access Point

Gina Daleiden

First 5 Yolo Executive Director

Jennifer Travis

Help Me Grow Yolo County Program Coordinator

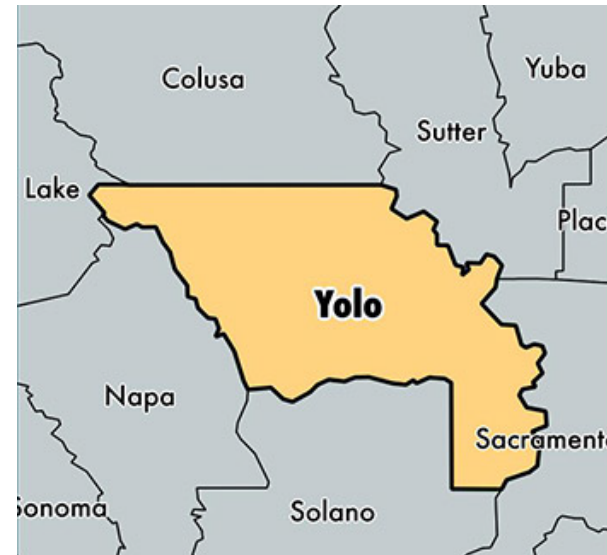


Help Me Grow  
Yolo County



# Landscape of Yolo County

- Yolo County Demographics:
  - Population: 218, 896 (as of 2017) 11,761 Under 5 Years of age
  - Predominate Races: 48% White, 30% Hispanic or Latino, 12% Asian
  - Main Languages Spoken: English, Spanish, Russian
  - Rural County- over 83% of the population residing within three cities
  - Median Household income \$54,989
- Lead Agency: First 5 Yolo
- Managing Agency: Northern California Children's Therapy Center
- Funding Sources: First 5 Yolo and Yolo County Health and Human Service Agency- Mental Health Service Act



# First 5 Yolo and MCAH Partnership

- First 5 Yolo is a long-time prevention partner of MCAH, and a member of the MCAH Advisory Committee
- MCAH Advisory Committee was an early supporter of First 5 Yolo efforts to expand developmental screening for children 0-5 as Help Me Grow was launched
- MCAH Advisory formally endorsed First 5 Yolo efforts to secure MHSA funding for HMG Yolo to expand the program
- MCAH Advisory included an endorsement of the request for MHSA funding for Help Me Grow in their priorities to the Board of Supervisors



# Original Plans for Centralized Access Point



- 4 different Family Resource Staff answering an 800 number, along with program coordinator
- Care Coordinator would be different day to day- based on location and primary language of caller
- Considering 211

Monday	Tuesday	Wednesday	Thursday	Friday





# Current State of CAP



- 3 Qualified staff answering incoming calls due to increase in funding from Mental Health Service Act of Yolo County's Health and Human Services Agency
- Set up onsite with connection to cell phones
- Hours of operation are 9-5
- Own HMG specific phone number 844-410-GROW
- Call back number not "844" phone number

