



# 2009/10 NATIONAL SURVEY OF CHILDREN WITH SPECIAL HEALTH CARE NEEDS

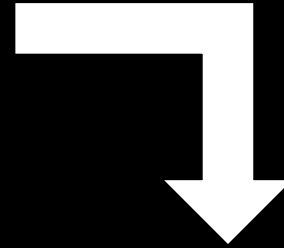
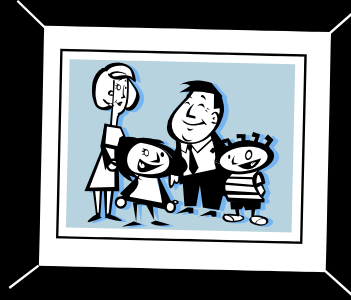
Lindsey Clopp, MSPH Candidate

UCSF Family Health Outcomes Project

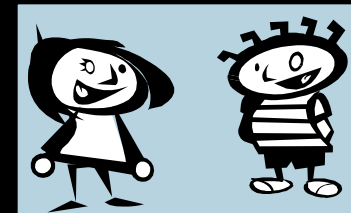
# Background

- Sponsored by MCHB, DHHS
  - Conducted by the National Center for Health Statistics, CDC
- Uses a broad definition of Children with Special Health Care Needs (CSCHN):
  - “Those who have a chronic physical, development, behavioral, or emotional condition and who also require health and related services of a type or amount beyond that required by children generally.”

# Methods



CSHCN?



Ask NS-CSHCN  
Survey Questions



Ask household  
demographics



# Sample Size

**196,159**  
Households with  
children sampled  
nationally

**40,242**  
CSHCN  
interviews  
completed  
nationally

**372,698**  
Children screened  
for special health  
care needs

# Comparing National Definition of CSHCN with CA CCS Enrollment

**Children with Special  
Health Care Needs  
2009/10**

**Estimate Number =  
997,157**

**CCS  
enrolled  
2009 =  
158,074**

# Topics

- Demographics
- Child's Health and Functional Status
- Health Insurance Coverage
- Health Care Access and Utilization
- Medical Homes
- Early Childhood (0-5 years)
- Middle Childhood and Adolescence (6-17 years)
- Family Functioning
- Parental Health
- Neighborhood and Community Characteristics

# National Indicators

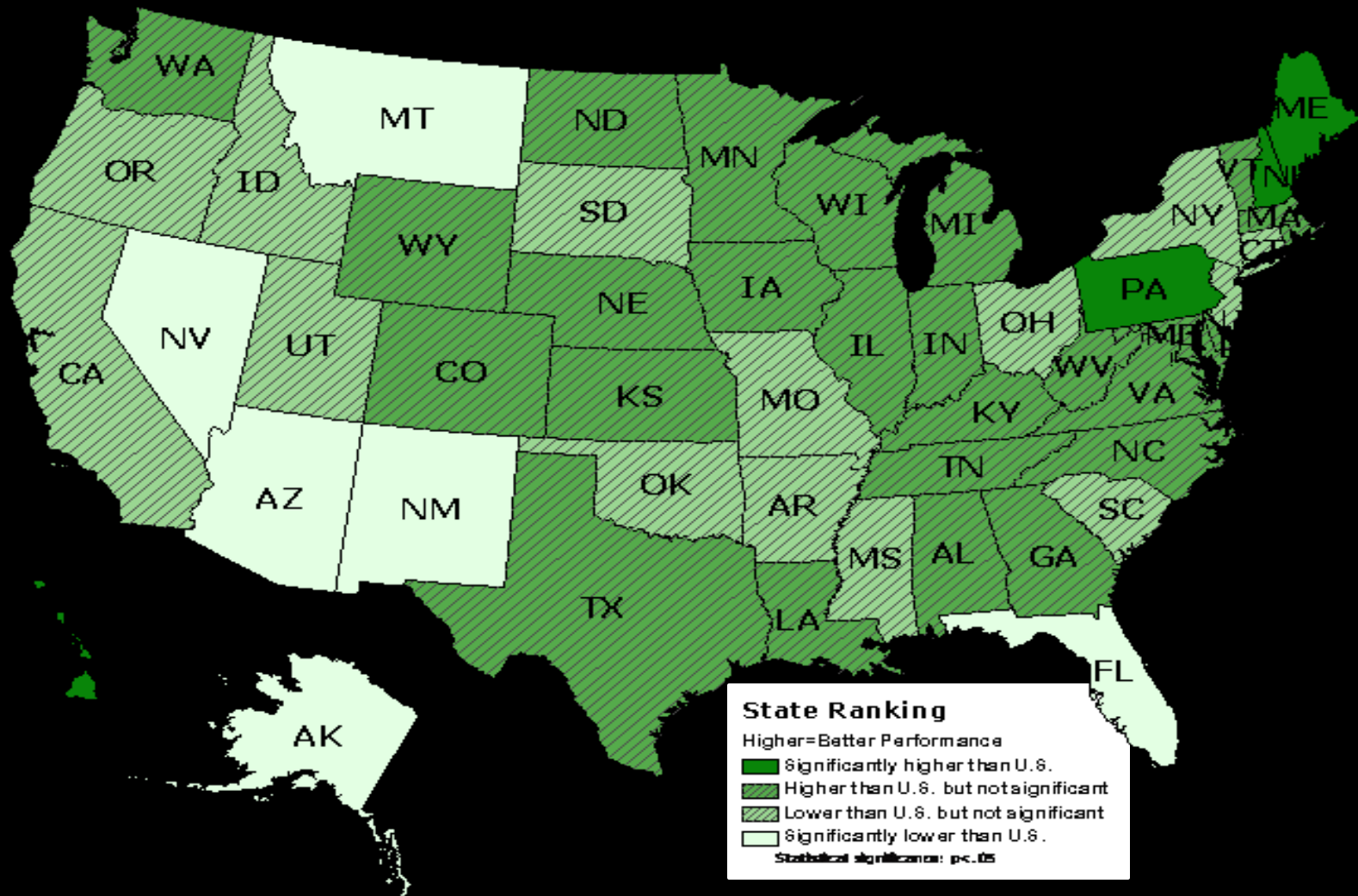
- Child Health
- Health Insurance coverage
- Access to Care
- Family Centered Care
- Impact on Family

# MCHB Core Outcomes

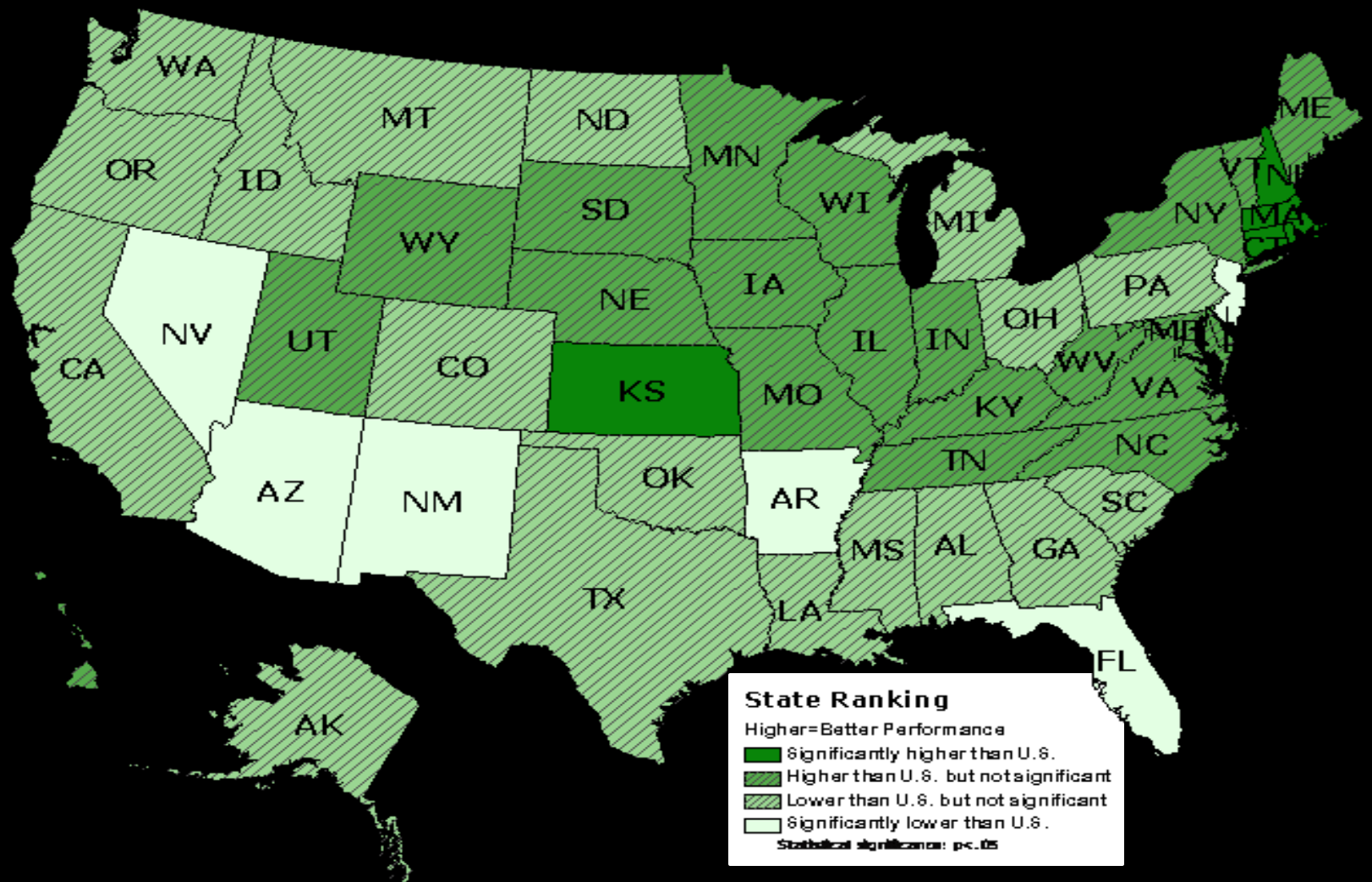
1. Families are partners in decision making and satisfied with services
2. Have a medical home
3. Have adequate private and/or public insurance
4. Screened early and continuously for special health care needs
5. Community-based services are organized for ease of use
6. Receive services needed for transition to adulthood (ages 12-17 only)



# States that met first 5 Core Outcomes (CSHCN 0-11 only – excludes outcome 6)



# States that met all 6 Core Outcomes (ages 12-17 only)

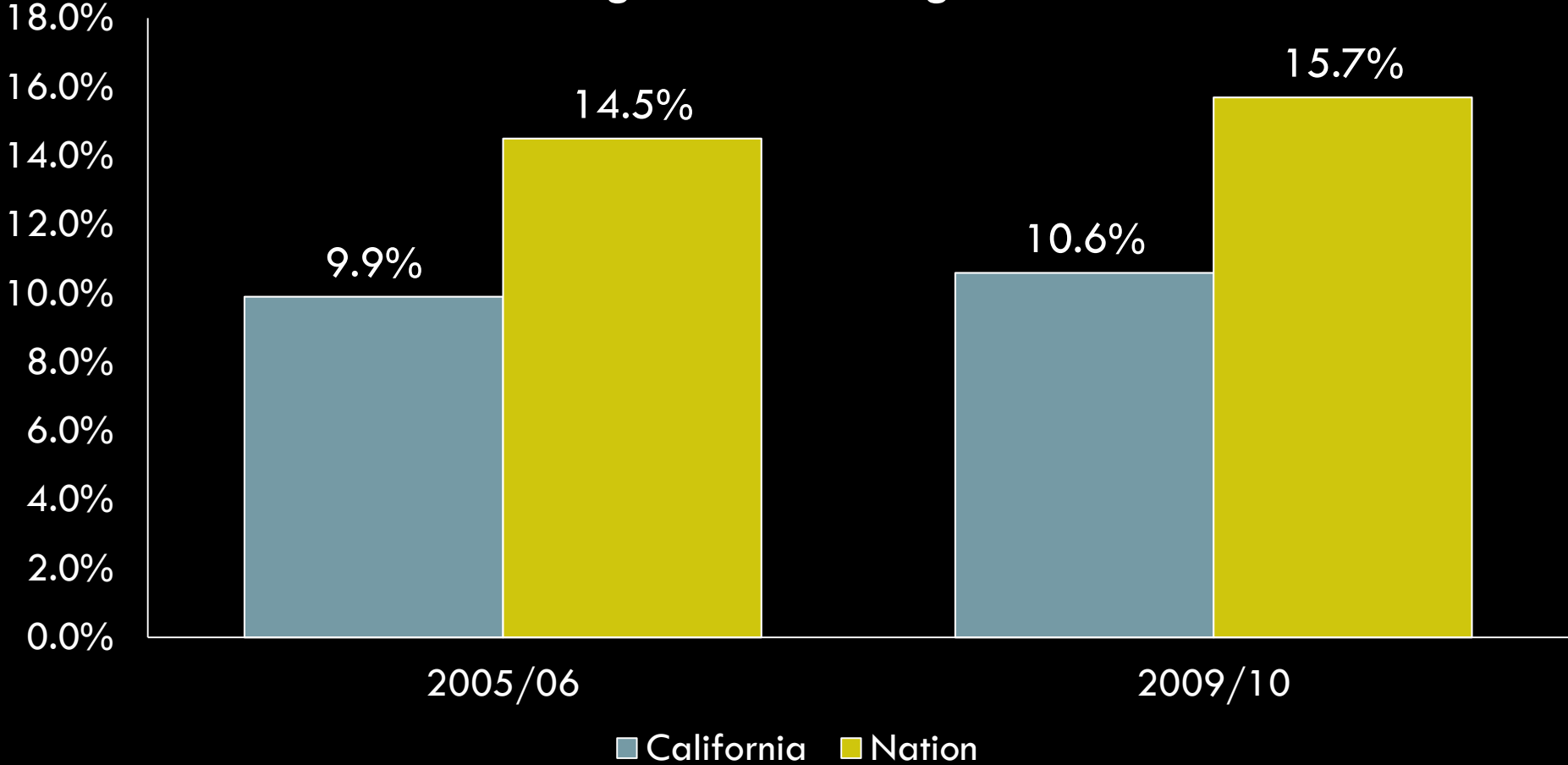


# CHILDREN WITH SPECIAL HEALTH CARE NEEDS IN CALIFORNIA

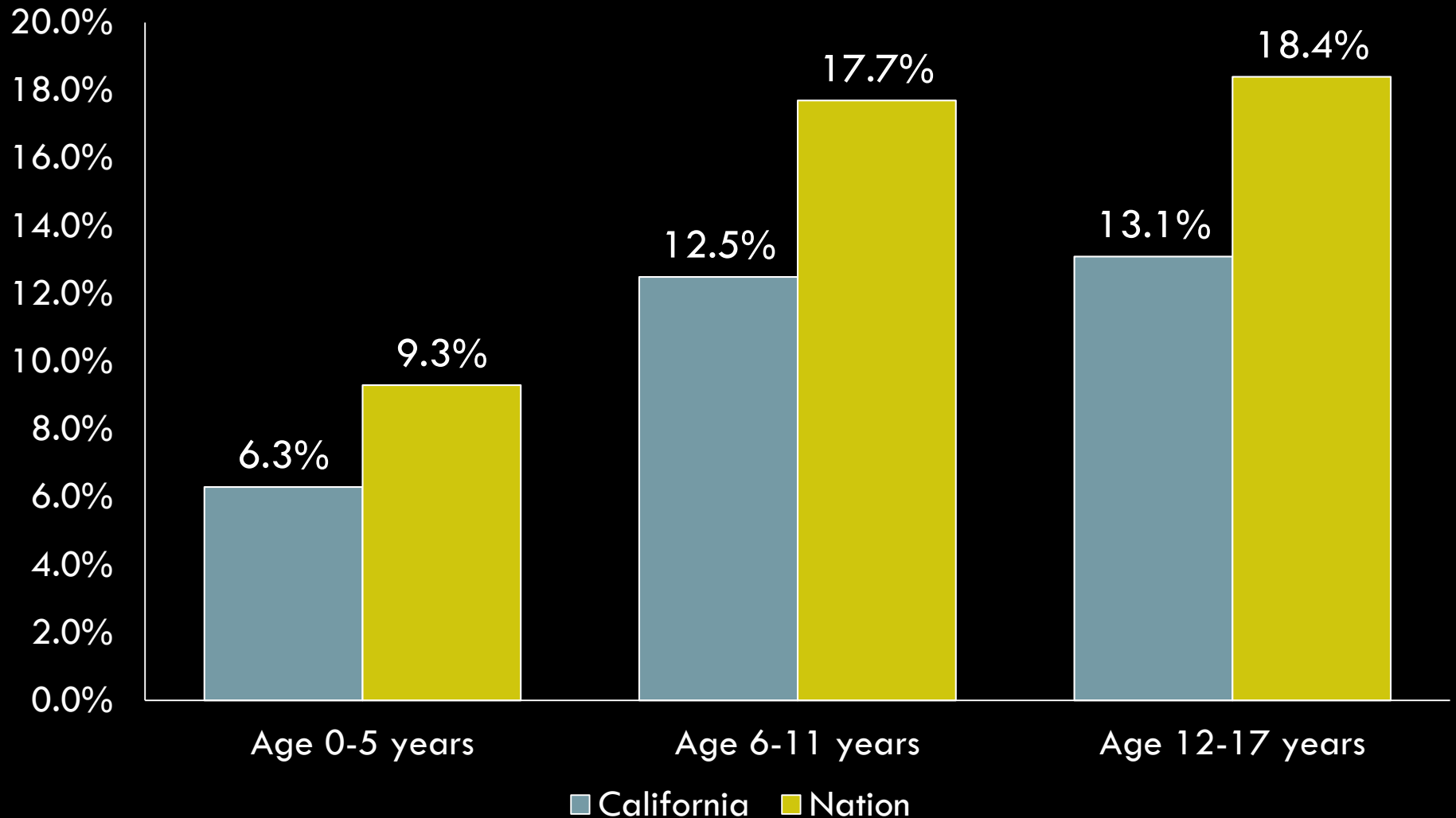
A Lucile Packard Foundation Report, January 2013

# Prevalence of CSHCN in CA vs. Nation

**Percentage of Children with Special Health Care Needs  
Among All children Ages 0-17**



# CSHCN Prevalence by age: CA vs. Nation



# Explaining prevalence of CSHCN in CA

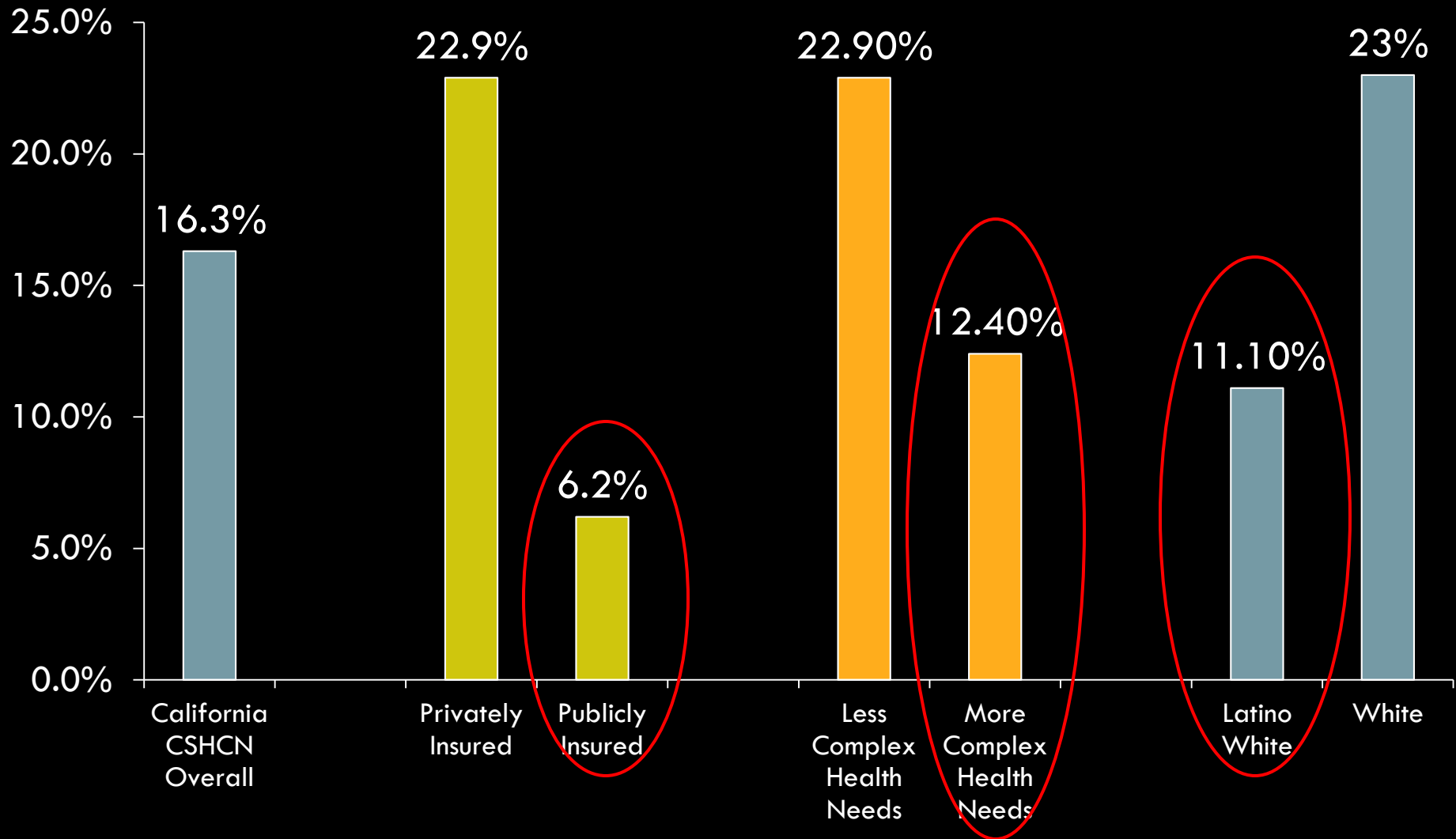
California  
CSHCN  
Diversity

California vs.  
National  
Eligibility  
Criteria

# Federal Quality Standards (Core Measures)

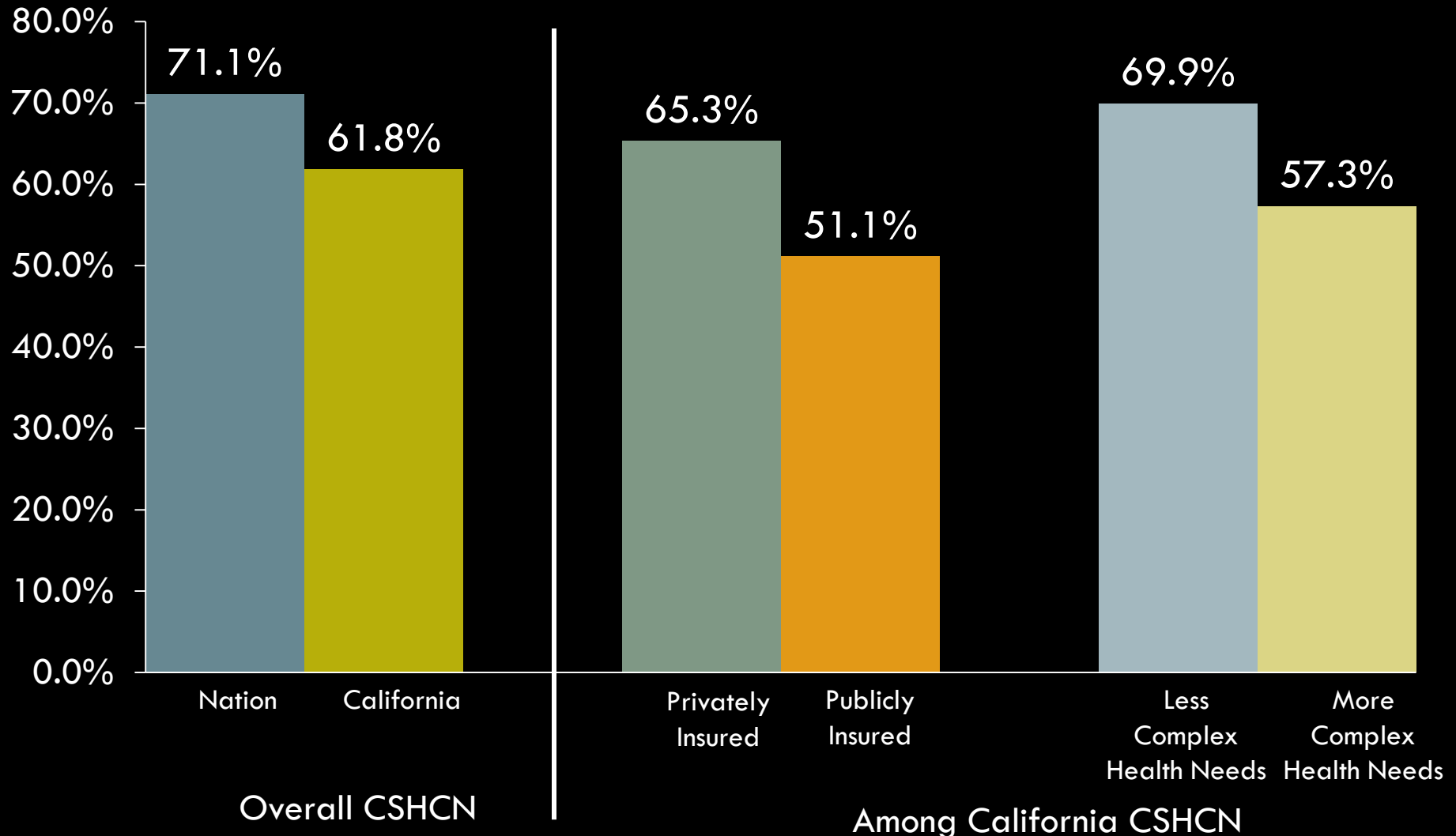
1. Shared decision making between families and providers
2. Care within a medical home
3. Consistent and adequate insurance coverage
4. Annual screening through preventive medical/dental visits
5. Access to community –based services
6. Transition planning for adulthood for ages 12-17

# California Children with Special Health Care Needs: Federal Quality Standards

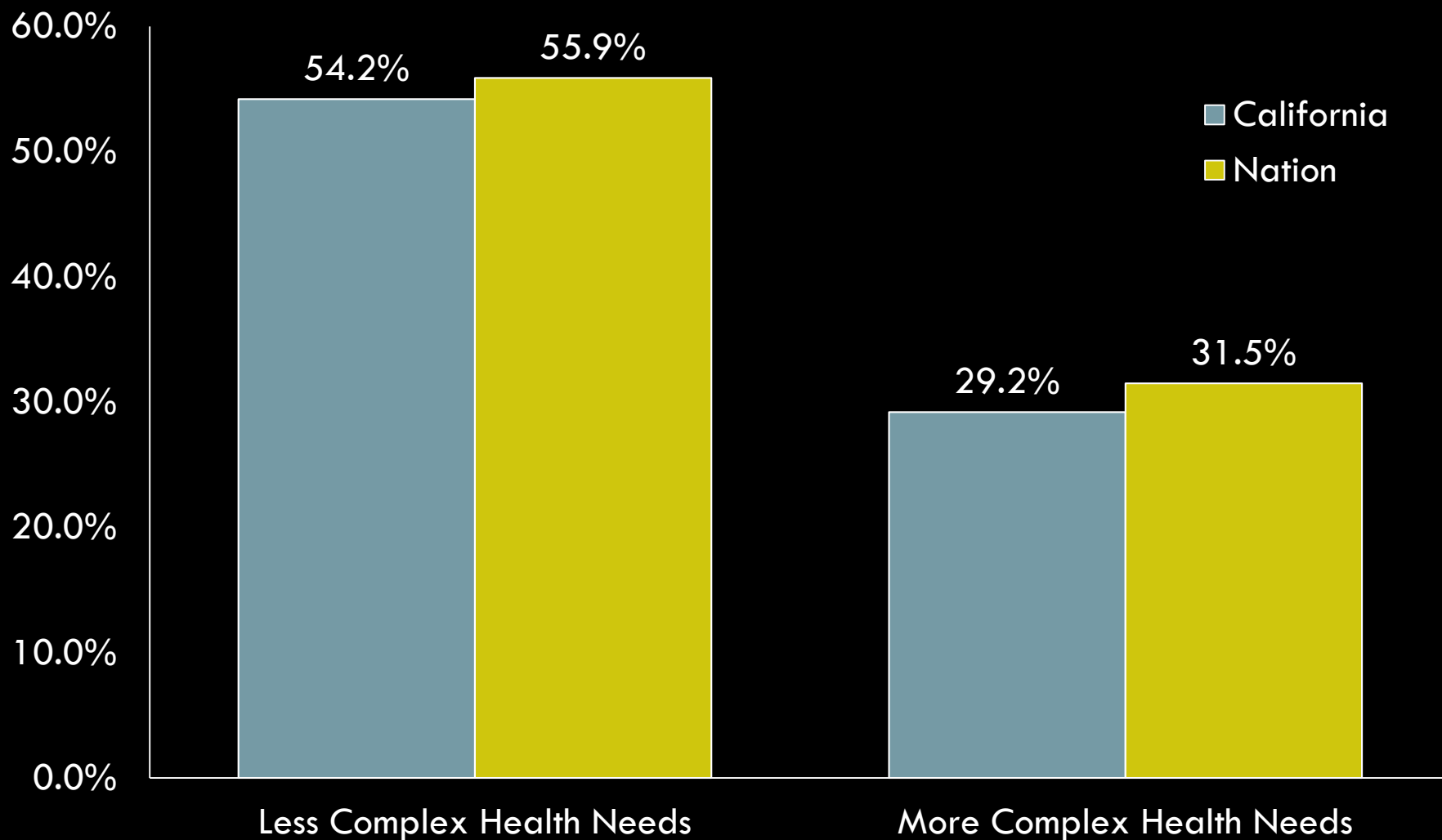




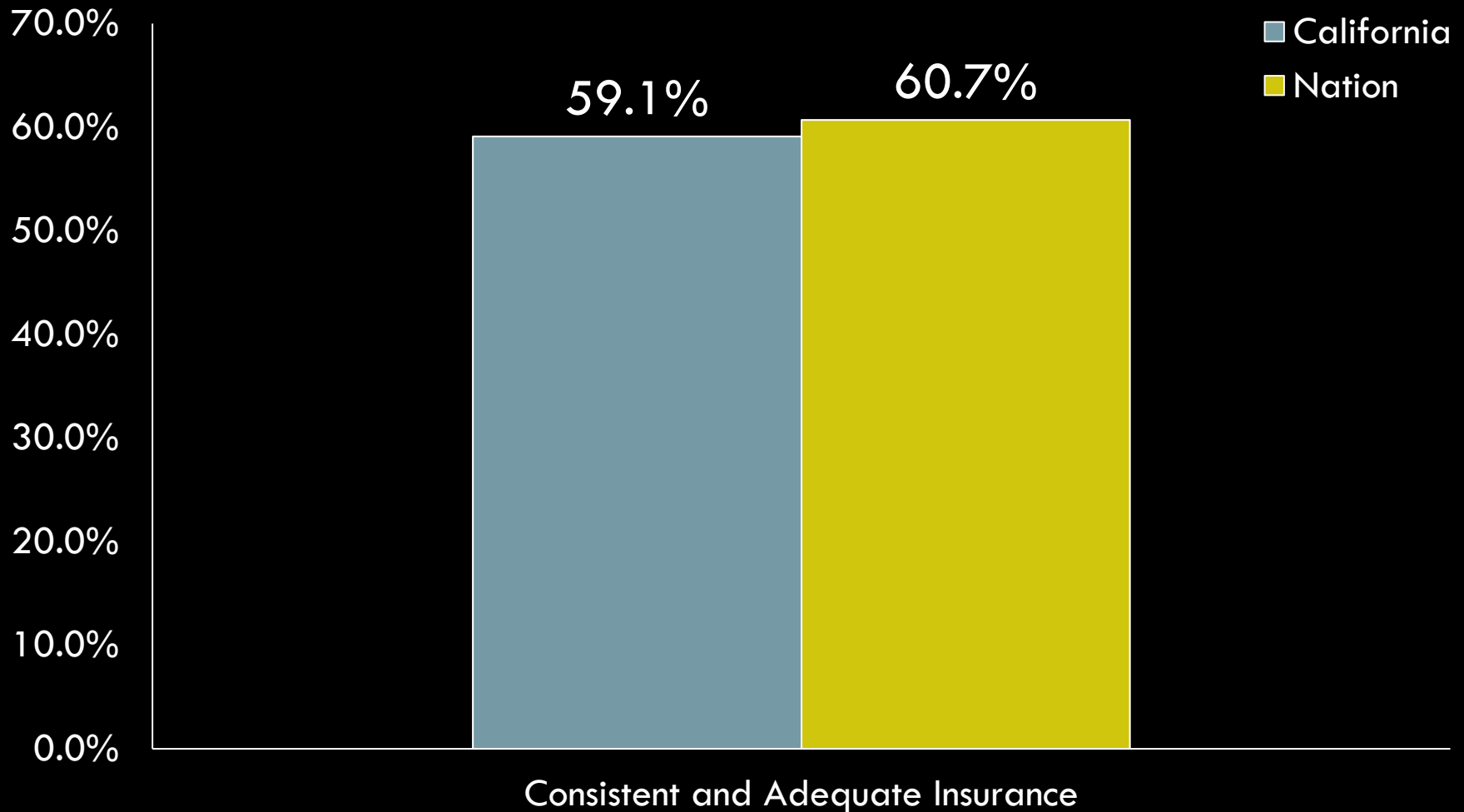
# Outcome 1: Shared decision making between families and providers



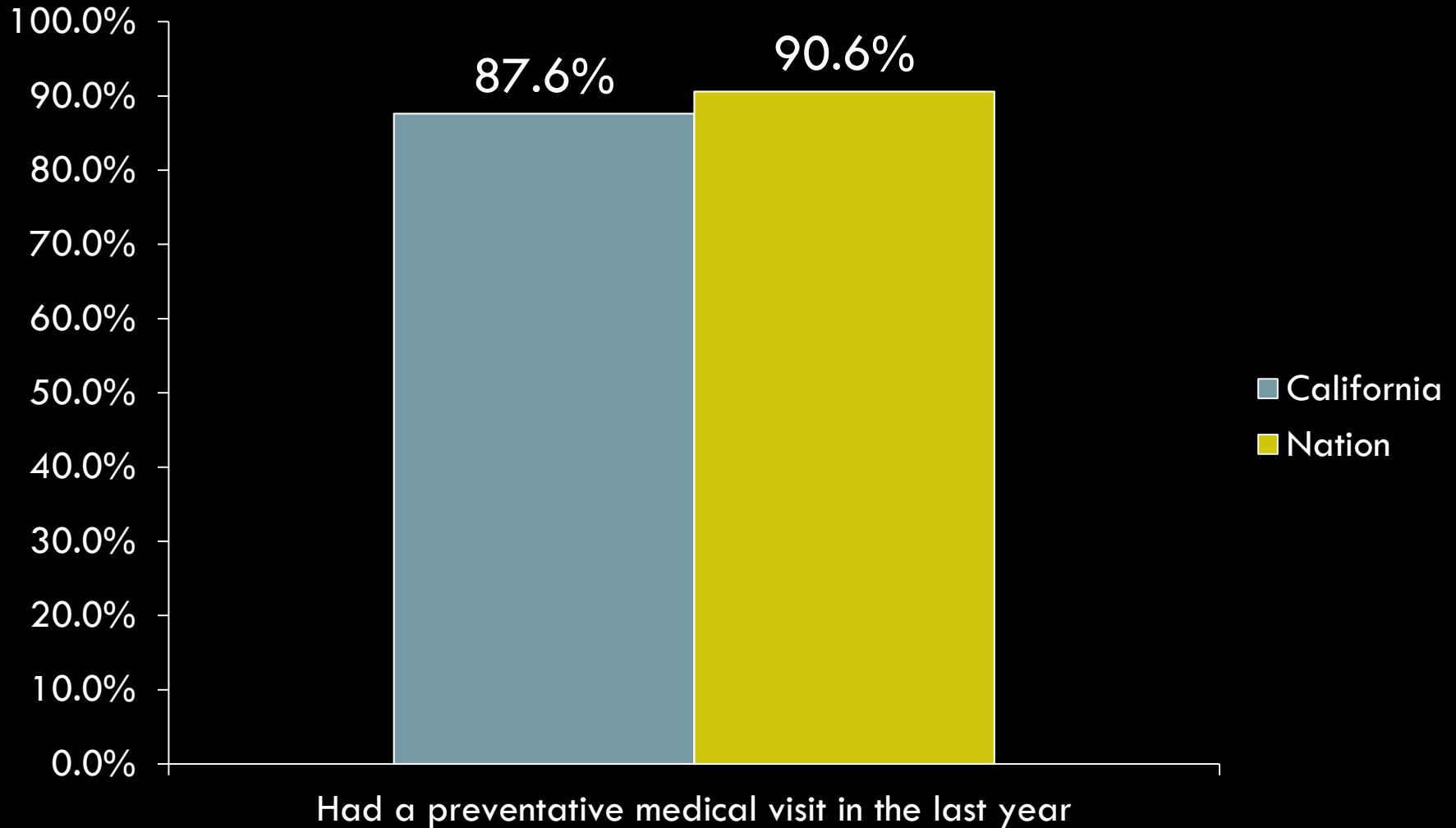
# Outcome 2: Care within a medical home



# Outcome 3: Consistent and adequate insurance coverage

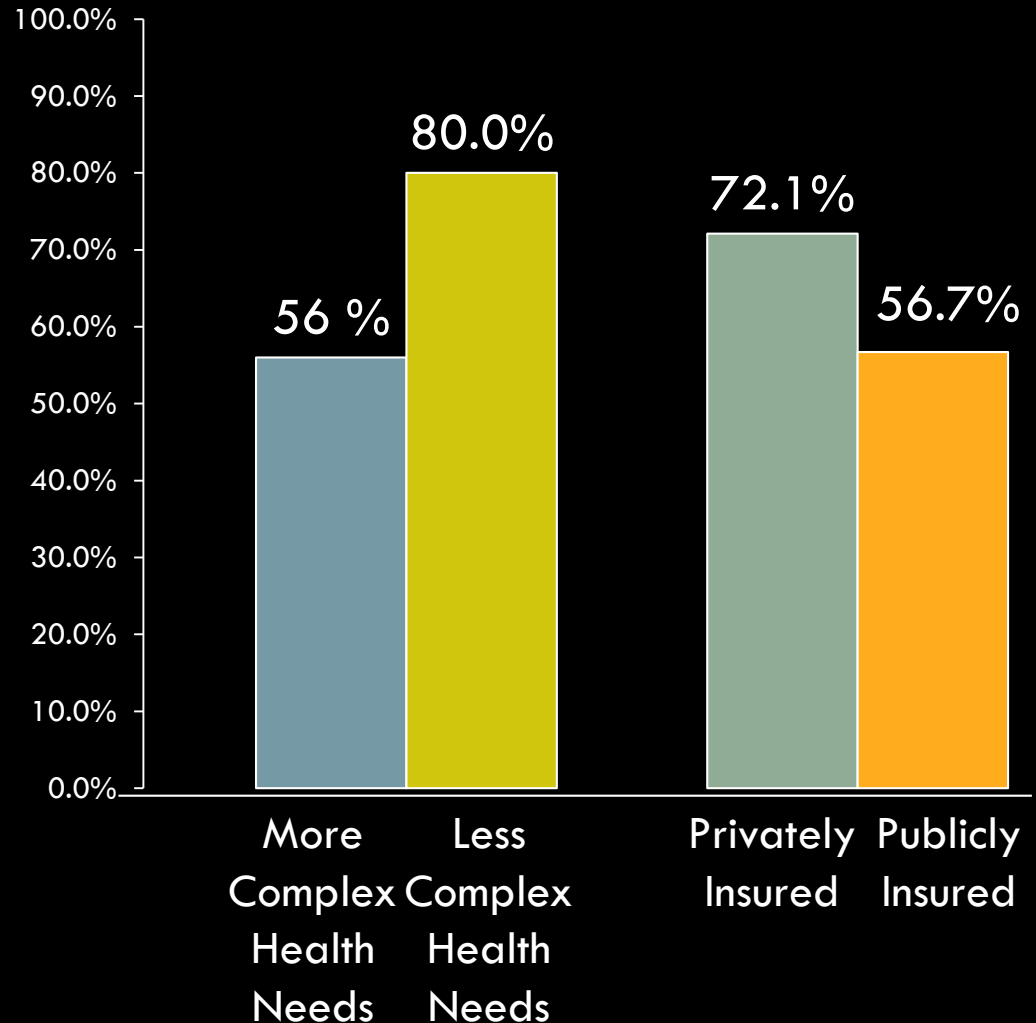


# Outcome 4: Annual screening through preventive medical/dental visits



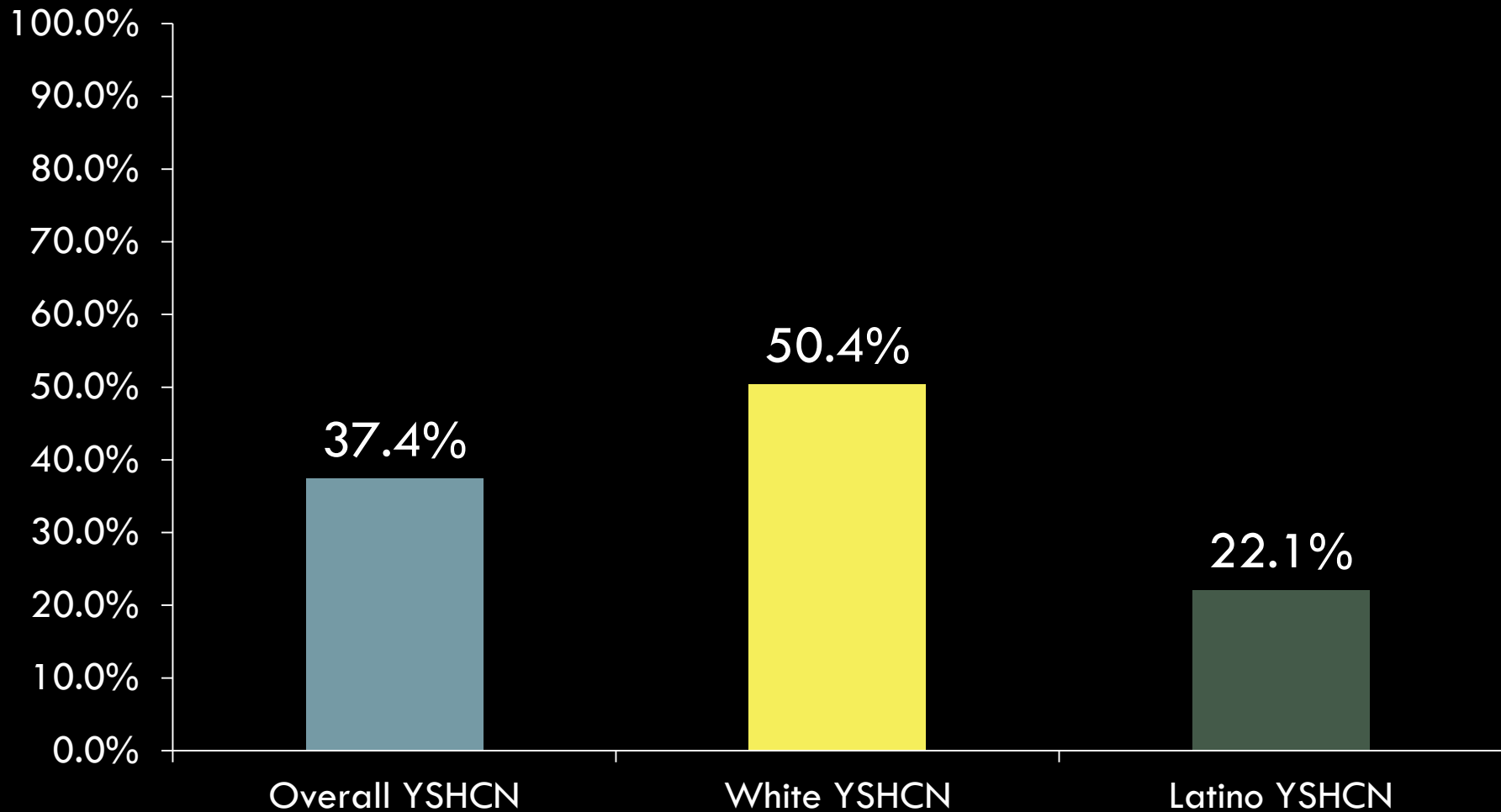
# Outcome 5: Access to community – based services

- 65% CSHCN with good access to services
- Disparities exist
  - ▣ More complex health care needs vs. less complex health care needs
  - ▣ Privately vs. public insurance



# Outcome 6: Transition planning for adulthood for ages 12-17

## Received transition planning



# Summary

- CA is performing worse than other states across multiple measures
- Diverse population of CSHCN
- Quality of services for CSHCN with more complex needs
- Poor access to care
- Many medical needs currently unmet

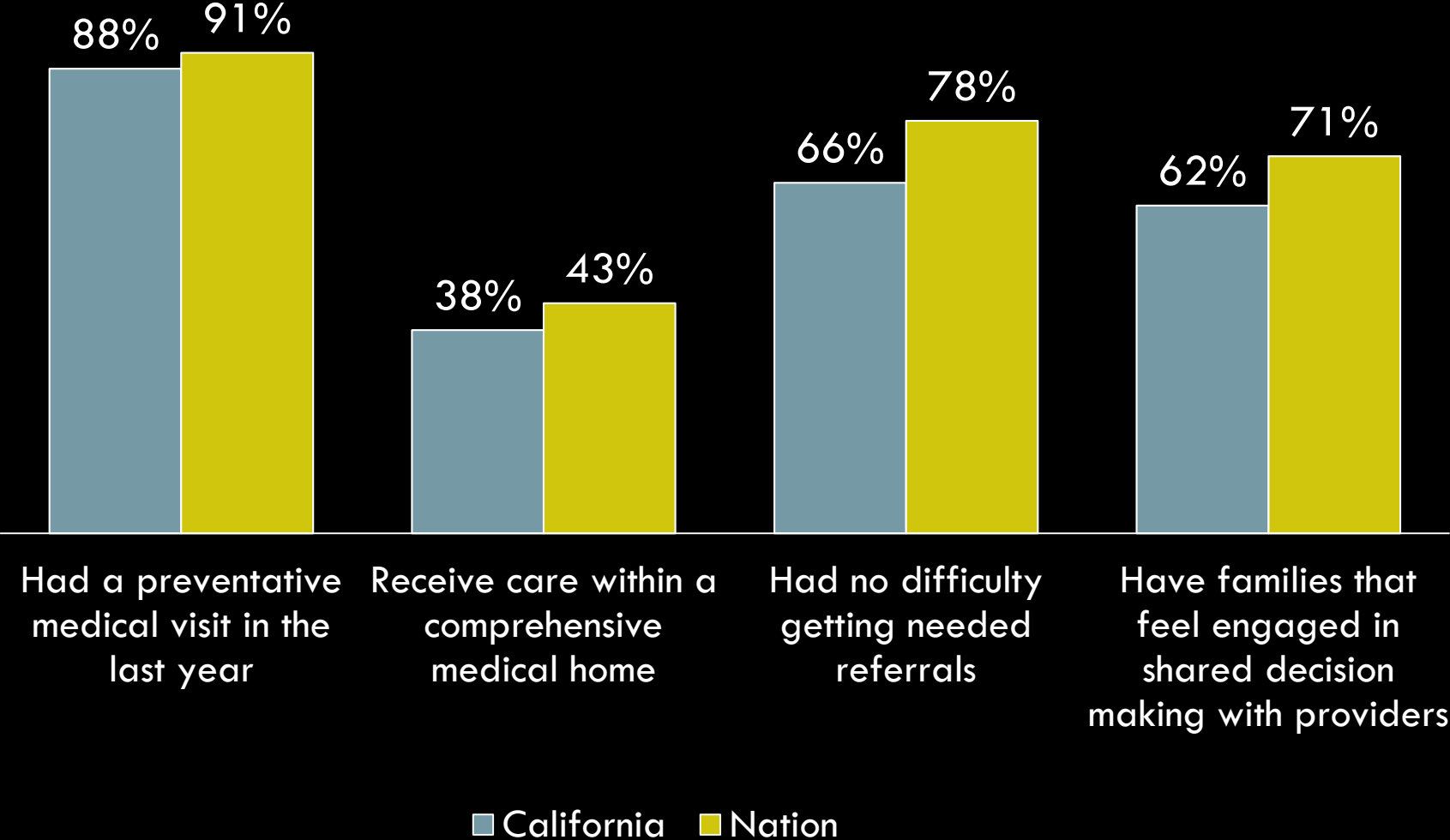
# References

- Lucile Packard Foundation for Children's Health. (2013). *Children with special health care needs in California*. Retrieved from: <http://lpfch-cshcn.org/publications/research-reports/children-with-special-health-care-needs-in-california-a-profile-of-key-issues/>
- National Survey of Children with Special Health Care Needs 2009/10. Child and Adolescent Health Measurement Initiative, Data Resource Center on Child and Adolescent Health website. Retrieved from: <http://www.childhealthdata.org/learn/NS-CSHCN>



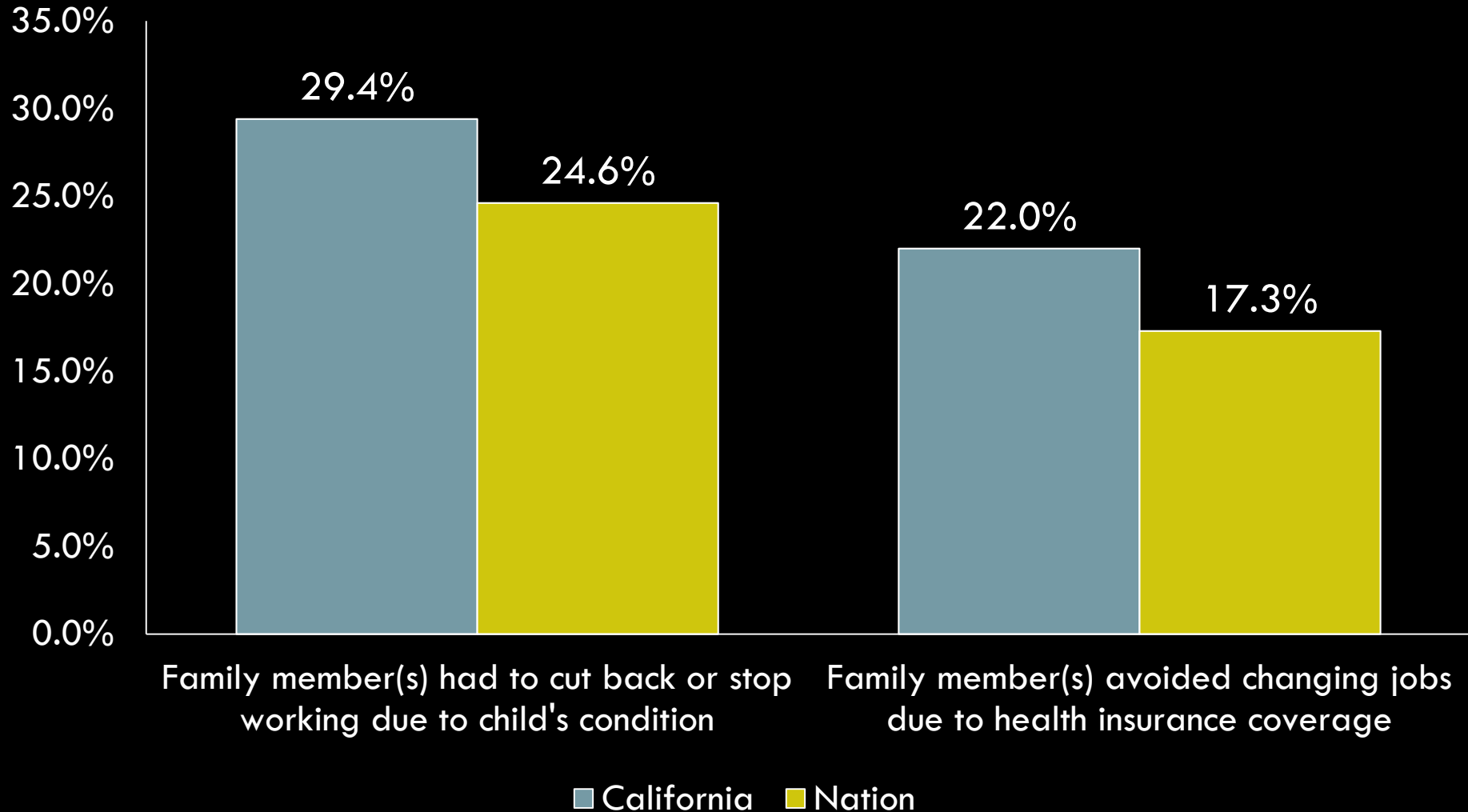
# Significant Indicator Differences

**CA vs. Nation on Health System Performance**



# Impact on Children & Families

## CA vs. Nation



# Indicators by Insurance Type and Complexity of Healthcare Needs

- Impact on daily life
- Access to community-based and comprehensive care
- Impact on families
- Receiving care that meets federal minimum quality standards